

That We May Live Together



2023 Annual Report

April 1, 2023 - March 31, 2024



Asian Rural Institute
Rural Leaders Training Center



All the guests who have gathered for the 50th anniversary ceremony (September)

Greetings

The year 2023 marked the 50th anniversary of ARI, and we were able to celebrate it in a grand way with our supporters and alumni both at home and abroad. It was a time of great joy and gratitude, but also a time of deep reflection on the future of ARI. On the occasion of our 50th anniversary, we adopted the major theme, “Learn Together for a Rural Future,” and we renewed our commitment to comprehensively develop ARI as a learning institution in the five areas of “Peace from the Soil,” “Foodlife,” “Climate Justice and Climate Action,” “Education,” and “Organization.” A number of projects have already begun to materialize and expand upon these visions. We are very pleased that we have received considerable financial support for these projects, and that the campus is evolving every day to serve future rural leaders.

On the other hand, reflecting the conflicts and confrontations taking place in various parts of the world, the 2023 students were drawn from regions dealing with more difficulties than in previous years. Participants this year came from regions in the midst of civil

conflict, such as Myanmar, Cameroon, and the northeastern Indian state of Manipur, and from countries and regions where inhumane violence is rampant, such as Haiti, where anarchy has persisted for several years. As such, they seemed to have more serious and complex challenges and greater responsibilities as regional leaders. Nevertheless, participants, volunteers, and staff were encouraged by the daily positive reports of alumni from around the world who are demonstrating more effective leadership as a result of their studies at ARI, and this served to increase everyone’s commitment to the training.

The solution to the challenges of rural communities is not so easy to find, as they involve complex structures of ethnic, religious, and other conflicts, in addition to the effects of globalization and global warming. However, this is why we believe more than ever that unity and peaceful development of local communities are not possible without servant leadership that focuses on listening to and empathizing with the inner voices of the people and ourselves, and aims to strengthen and

grow everyone involved. It is with gratitude to all of you who resonate with and walk alongside ARI’s philosophy and values of leadership development that we would like to present our report for the fiscal year 2023.



Toshimasa Yamamoto
Board Chair



Tomoko Arakawa
Director

Index

Snapshots 2023		
ARI 50 th Anniversary	4	
Nurturing Rural Leaders		
From Self Transformation to Communal Transformation	6	
Challenges for Recruitment	8	
Community of Learning		
In God We Hope and Trust	10	
Appreciating the Volunteers	11	
Foodlife at ARI		
Living With Climate Change	12	
Together with Supporters		
The 50 th Anniversary Broadens Our Circle	14	
Regional Convening Program Launched by AFARI	15	
Good Production of Sales Items	15	
Our Supporters & Partners	16	
Open Learning Programs		17
Graduates at Work		
Graduates Join 50 th Anniversary Celebrations		18
ARI Graduate Village Visits		19
Financial Report		20
Curriculum		22
Community Members		23
Class of 2023		24

Cover Art: Han Sakawa (2023 Volunteer)

ARI 50th Anniversary

In 2023, to celebrate ARI's 50th anniversary, we have undertaken various commemorative projects. These projects will not end with the 50th anniversary, but new projects will continue under the same vision.

1) Formulation of Vision and Theme

Preparations for the 50th anniversary began in the winter of 2020, and after two years of work, the vision statement* was finalized. The theme for the 50th anniversary was decided, and the approach for implementing the theme was determined, including a whole-campus approach that would comprehensively advance the five key areas of ARI.

Theme and Logo



The 5 Key Areas

- Peace from the Soil
- Foodlife
- Climate Justice and Climate Action
- Education
- Organization

*The vision statement is published in the Spring 2023 issue of "Take My Hand" (see QR code).

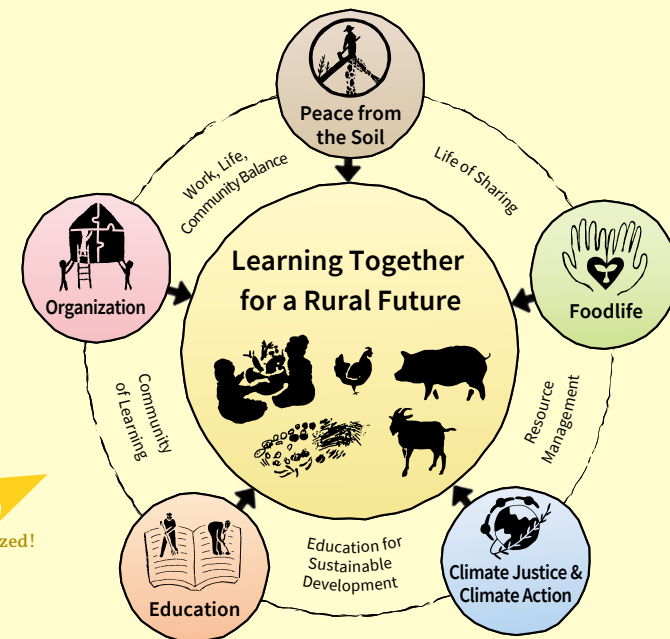


Image of the Whole Campus Approach presented in 2021

Visualized!

After more discussion and design...

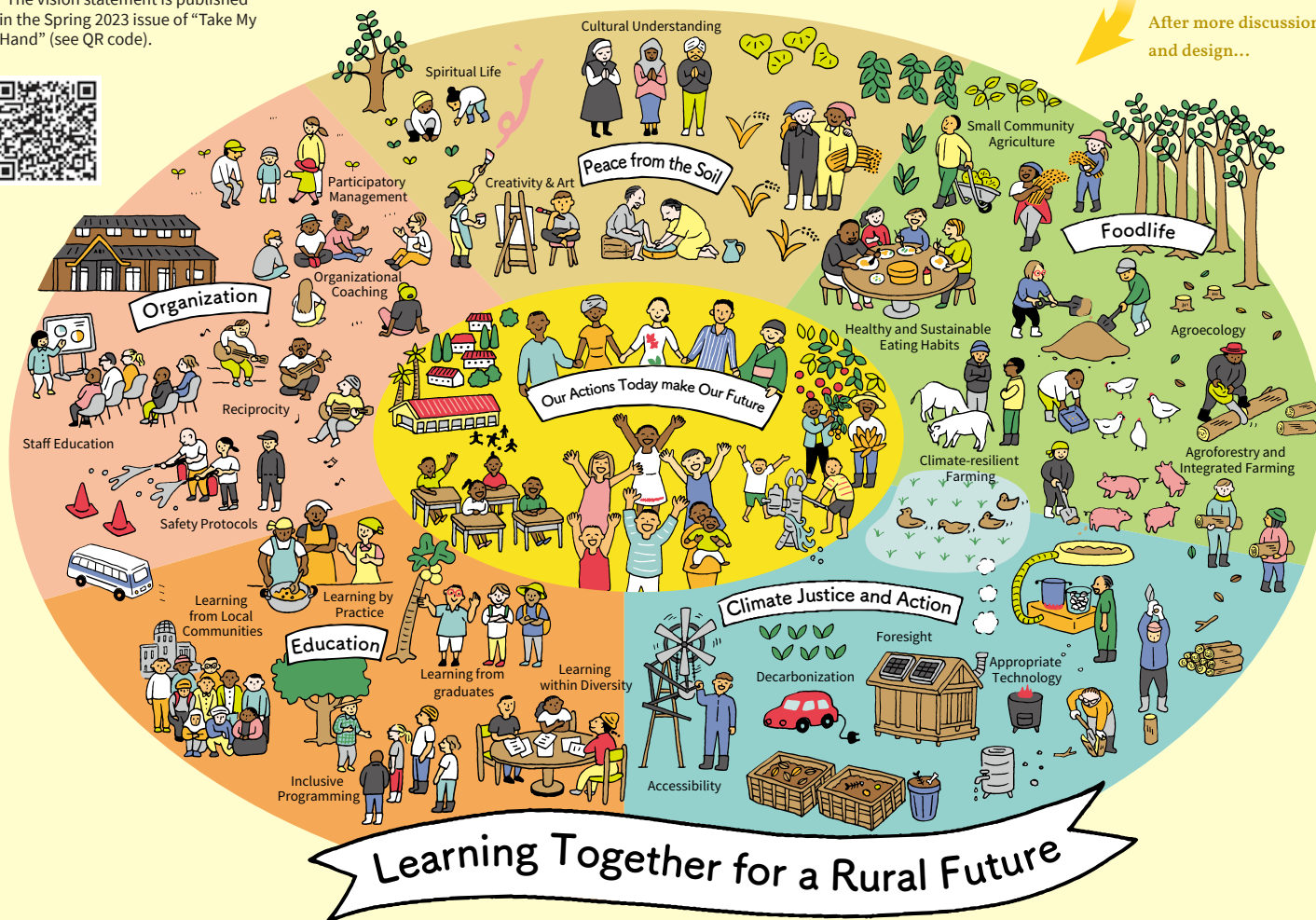


Illustration presented in 2023

Various projects were implemented based on the vision and theme established.

2) 50th Anniversary Special Website Launched



ARI launched a special website for a limited time to call for commemorative donations, receive congratulatory messages from alumni and supporters, as well as introduce ARI's history. (Ended March 31, 2024)

3) Publication of Tomoko Arakawa



Seeking "Knowledge" for Living Together - From the Window at ARI

Tomoko Arakawa, ARI Director, published a book containing her writings including various articles as well as her remarks at entrance and graduation ceremonies.

4) Publication of English Haiku Picture Book and Exhibition of Original Watercolors



Food for All Our Tomorrows (Japanese/English)

A picture book of English haiku written by Joyce Ray, an American supporter and children's literature scholar, based on her life at ARI, and illustrated with watercolor paintings by Susan Rock. From October 3 to 18, an exhibition of the original artwork from the book was held with Joyce at Hikari no Café, the Hachisu Elementary School Coffee Shop in Otawara City near the ARI campus..

5) Documentary Video Production

Associate Professor Kyle Hufford and 15 students from the Department of Communication Studies at Goshen College in Indiana, spent two weeks in May creating a 30-minute documentary and a 4-minute promotional video. (to be released)

50th Anniversary Fundraising - Goal of 20 million yen achieved

We would like to express our sincere appreciation to all of our supporters!



The total amount of donations (domestic only) to the 50th Anniversary Fund for FY2022 and FY2023 reached \$145,028. Of that amount, the first round (July 1-20) of the two times of crowdfunding conducted, exceeded the goal of \$3,298 (500,000 yen) by a wide margin, reaching \$6,794. The second round of crowdfunding (September 16 - October 31) also reached its goal of \$19,788 (3 million yen).

6) Online Alumni Reunion

In addition to alumni, former volunteers and staff were invited to an online alumni reunion held six times between April and June, bringing together a total of about 240 people to report on their recent activities, share fond memories, and discuss what they learned that has proved useful after graduation.



7) September 16 (Saturday) - Commemoration Ceremony



A total of 200 people gathered in the Koinonia Dining Hall to celebrate the 50th anniversary with supporters, friends and family members, as well as graduates and their families from overseas. The 50th anniversary service featured a sermon by Reverend Robert Witmer (missionary of the United Church of Canada), and the commemorative program included a speech by Mr. Ardhendu Chatterjee (India, 1978 graduate) on behalf of all ARI graduates. The program featured a multinational crowd in colorful costumes, food and songs from many countries, and many congratulatory messages making for a lively and joyful celebration.

8) Forest Trail Maintenance

We have resumed maintenance of the forest (2 ha) on the campus grounds, which we had been unable to actively maintain since the Great East Japan Earthquake. The forest was divided into three zones (1. nature exploration, 2. integrated farming, and 3. climate change action), and a small walking trail was added. Tree planting has begun in accordance with the purpose of the zones and will continue in the future.



9) Informational signs for the goat shed, piggens, and chicken coops



As part of our efforts to make campus facilities more open and educationally meaningful, we installed signs in front of each livestock barn with cute illustrations to familiarize visitors with the ecology of livestock.

Other projects related to the five priority areas

- Garbage composition survey
- Installation of LED lights throughout the buildings
- Installation of "solar power generation - storage - consumption visualization" system in classroom
- Off-grid house (completed in May 2024)
- Earth oven

Nurturing Rural Leaders

Curriculum, Admissions and Recruitment



“Studying at ARI is a new start for me in building a community. With the various experiences and knowledge I have gained, I am increasingly confident that I can return and work with the community. I realize there will be many challenges, but I also believe that I have seeds that I need to care for and must grow well.”



Angela Ratna Sari Biu
(Indonesia)

For the first time in four years, all participants arrived in April

From Self Transformation to Communal Transformation

Training Program Report



Yukiko Oyanagi
Associate Director
Curriculum Coordinator

2023 was the first time in four years that almost all participants were able to come to Japan by the end of March and participate in the full training program. In December, 26 participants from 13 countries successfully completed the program. We would like to thank all those who supported this training program, both materially and spiritually.

Confronting Difficulties

For participants, the nine-month training program was not easy. Some participants had difficulty adjusting to a different environment, away from their own villages, family, and friends. The climate and food were both obstacles that some participants had to overcome. We also saw participants who were stunned by their inability to communicate in English. Some participants were troubled by the worsen-

ing conditions in their countries. Some participants had never thought of taking on a leadership role among people, including staff. Nevertheless, with the support of the staff, the support of their classmates, and the encouragement of the volunteers, the participants completed their nine-month, 1,892-hour training period.

Diverse Learning

The learning experience at ARI is diverse. In the classroom alone, we learned about leadership, sustainable agriculture, and development theory. Participants received more than 500 hours of agriculture-related practical training, and they produced and cooked their own vegetables, rice, meat, and eggs for ARI's meals. Participants took on leadership roles in each of their tasks, and learned through practice what they had learned in the class-

room. The off-campus study tours, which were conducted for a total of 26 days in 10 prefectures and covered a total distance of 5,000 km, allowed the participants to learn what they could not learn on campus as well as to learn from other perspectives. In addition, there were morning assemblies and consultations to promote internal growth, summer individual training in which participants decided the content of their own projects, a Harvest Thanksgiving Day held under participant leadership, and even an exchange program with a Japanese school. This year ARI celebrated its 50th anniversary, and participants took the lead in preparing regional dishes for the ceremony. Learning from the alumni who participated in the ceremony was also a special opportunity for this year's participants.

Encouraging Self Transformation

ARI's training program is designed to promote self-transformation as a leader. ARI provides the knowledge, skills, and experience necessary to become a rural leader, but the participants are encouraged to digest each piece of knowledge and experience on their own initiative. Through the nine months of training, the participants have come to think differently than when they first arrived at ARI. A good example is the concept of servant leadership. The concept of servant leadership gradually became the norm for the participants where a leader does not draw conclusions, but rather encourages people to participate, listens to their opinions, and works with them to achieve goals while empowering them. Through this process of self-transformation, the participants' vision for the future became to transform their commu-

nities by "building stronger communities of women and youth," "transforming rural communities through organic farming," and "creating self-sustaining and sustainable communities." This is a clear indication that the training is not only for the participants themselves, but also for their respective communities and local people to whom they will return upon going back to their country.

“What I learned at ARI was about connections, or networks. I am not talking about superficial connections, but deeper ones. This is true both for the environment, and for human relationships. I believe that caring for and helping others also makes connections and networks.”



Joselin Coyago
(Ecuador)



1



2



3



4



5

“Compost is slowly becoming my biggest learning so far because it has long time effects and it has a lot of resources around any community, my visit to compost centre opened my thinking to a wider perspective of being a farmer, I don't have to be only a farmer for today, but a farmer for the next generation.”



Geoffrey Mbewe
(Zambia)

Challenges for Recruitment

Admissions and Recruitment Report



Manosi Abe Chatterjee
Admissions and Recruitment

All applicants must go through a long application process when applying to ARI. We must then ask ourselves difficult questions, facing their application. Do we get a sense of their community? Their struggles, joys, and dreams? What is the potential impact of a possible ARI graduate in that region? Is our training what they really need?

When we write this report, we do so seeing the result of the process in front of us. The class of 2024 is slightly smaller than other years. Although the impact of COVID 19 on human life has reduced significantly, we still feel the impact it had on many organizations. NGOs cannot easily let key people in their organization leave for 9 months. Countries like Cameroon and

Myanmar still face conflicts. Recognition of women in leadership roles also remains an issue. We struggle to reach communities in need.

The highlight of our work comes in the form of our partnerships. We are strongly supported by volunteers and interns who later find immense meaning in connecting with those they helped get to ARI. Additionally, almost all the participants of 2024 were introduced to us by graduates, supporting organizations, or visits by other community members. We hope this continues in the future as we seek to strengthen such relationships, drawing us closer to our target grassroots communities.

- Photos:
- 1) PLA (Participatory Learning and Action) Discussion (July)
 - 2) Harvest Thanksgiving Day (October)
 - 3) Meat Processing Workshop (October)
 - 4) 50th Anniversary Ceremony (September)
 - 5) Rice Planting (June)
 - 6) Western Japan Study Tour (November)



6

Community of Learning

Community Life



ARI Sunday at Ryugasaki Church

In God We Hope and Trust

Chaplain's Report



Jonathan McCurley
Chaplain, Community Life

Rooted in the love of Christ. This was the mission upholding spiritual life in 2023. Facilitating ARI Sunday, a tradition in Tochigi churches for 50 years, was important to develop the participants, regardless of faith or tradition, in the love of Christ. The reach has grown throughout the Kanto region to dozens of churches who welcome ARI to hear God's word and hear about the work, countries and faith of participants. At one ARI Sunday this year, the people of the church were moved to pray daily for Myanmar and the participant was touched with courage to go back home through the encounter.

2023 saw the re-emergence of fellowship with local churches near ARI. During Covid many of the programs were halted

but this year's ability to spend time and learn from local Christians was a powerful chance to deepen roots in love and the local community. From the World Day of Prayer to International Sundays, testimonies abounded. Especially, Nishinasuno UCCJ Church, whose relationship with ARI spans five decades welcomed in earnest the chances to regularly interact and hear from participants.

New chances to encounter Christ and His Love happened at ARI as well. Minngos, ARI's gospel choir, celebrated 10 years, our weekly prayer meeting was well attended and daily morning gatherings often brought us to deeper thoughts and even tears. Yes, we became deeply rooted in the Love of Jesus Christ.

24 Churches Attended for ARI Sunday

Tochigi: Ashikaga East Church, Ujiie Church, Utsunomiya Uemachi Church, Utsunomiya Higashi Mission, Utsunomiya Matsubara Church, Oyama Church, Kanuma Church, Shioya Church, Tochigi Church, Nasushiobara Church, Nishi-Nasuno Church, Mashiko Church, Yaita Church, Yojomachi Church, Kanuma Christ Church
Ibaraki: Mitsukaido Church, Ryugasaki Church
Gunma: Kiryu Tobu Church, Shibukawa Church, Shimamura Church
Saitama: Saidai Toori Church
Tokyo: St. Alban's Anglican-Episcopal Church, Naka-Meguro Church
Yokohama: Yokohama Union Church

Comments from pastors and congregants

"It was refreshing to worship with brothers and sisters in Christ from other countries."

"I thank the Lord for the encouraging and powerful testimonies of the students in their difficult situations."

"It was an opportunity for me to think deeply about the situation of Christianity in Japan by hearing the situation of churches overseas."

Appreciating Our Volunteers

Volunteer/Intern Report



Yūko Emura
General Affairs

ARI would not be possible without the work of its volunteers, who in 2023 came from five different countries and included an experienced couple in their 60s, a 20-something searching for direction in life, and an 18-year-old who had just graduated from high school. In addition to their work on the farm, in the kitchen, and in the office, they inspired the students by their willingness to share their knowledge and experiences, and their willingness to learn and grow through voluntary events and daily conversations that enlivened the community.



Long-term volunteers of 2023

Number of volunteers and interns		Volunteer Sending Organizations	
	20	Germany: Evangelical Mission in Solidarity, Social Peace Service Kassel, e.V. (SFD)	
	9	USA: Brethren Volunteer Service, United Methodist Church Volunteers in Mission	
	28	Intern Sending Organizations	
		USA: Princeton Theological Seminary, St. Olaf College, Wellesley College, Wilmington College	
		Japan: Wesley Foundation, International Christian University, Setsunan University	

Comments from volunteers and an intern

"I used to feel angry and helpless about the contradictions in society, but after 9 months at ARI, I realized that my form of service is when I freely express myself in whatever I want to do, whether it is working hard on the farm, drawing pictures, or baking sweets, and when my feelings for other beings are connected. I gained confidence."



Han Sakawa
Long-term Volunteer
(Japan)

"We worked together in the soybean fields and had a lot of fun figuring out how to ferment natto. We also laughed together while harvesting mulberries and watched the juice ferment. These community and food experiences became part of my vision for the future."



Declan Mead
Long-term Volunteer
(Australia)

"A 'late bloomer' is defined as someone who is slow to realize their potential. Before coming to ARI, I did not see my slow progress as a strength. However, after learning about the deliberate and steady process of agriculture and the importance of blooming in your own time, I realized that it is never too late to start something new."



Clementine Stark
Intern
(Wellesley College, USA)

Foodlife at ARI

Foodlife



Harvesting potatoes

Living With Climate Change

Foodlife Report



Masanobu Sakurai
Foodlife (Crops & Vegetables)

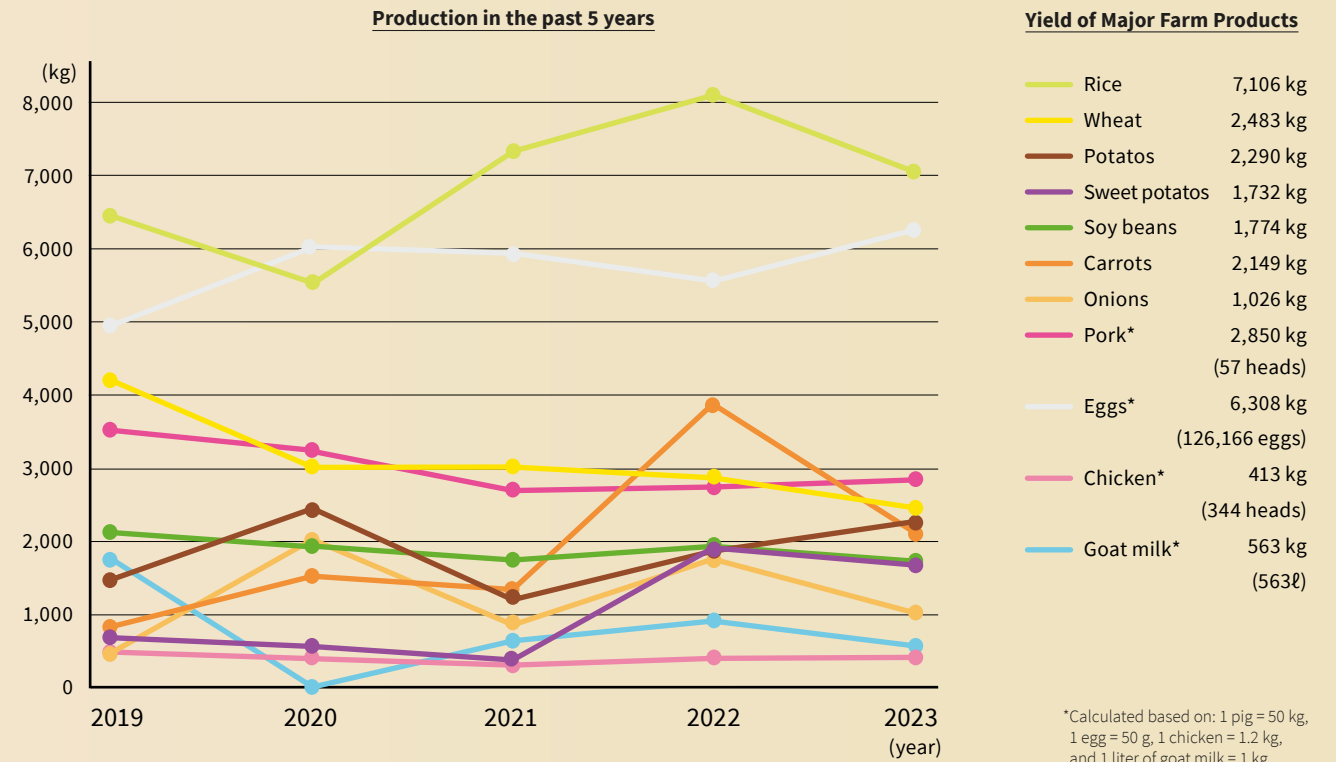
As in previous years, ARI began carrot cultivation in 2023 by sowing seeds directly in the field in late July to August. However, the summer of that year was extremely hot and prolonged, which seriously damaged the early stages of carrot cultivation, especially the sprouts, which require a lot of water for germination. Of course, we watered the seedlings properly after sowing, but the soil in the field dried out quickly due to the intense sunlight, and the seeds did not absorb enough water. We had to repeatedly sow seeds in areas where they had not sprouted, and we ended up using up all the carrot seeds, which we had thought was enough for three years' supply.

When the balance between water, sunlight, and soil is disrupted, plants are greatly affected. We believe that proper cultivation management is necessary to

mitigate this as much as possible. For example, it may be important to accelerate sowing and planting in the main field by a few weeks, or to introduce cultivars that are adapted to changes in the environment.

In the livestock sector, the summer heat was also very difficult. Some of our pigs, chickens, and goats became ill from the heat. This summer was a reminder that agriculture is the sector most affected by climate change. On the other hand, it is very important for participants to learn about livestock production, which is a source of cash income in rural areas. We hope to continue learning with the participants how to utilize locally available resources and how to cope with the changing environment while continuing to raise livestock. ARI's challenges will continue in 2024.

Yield of Major Farm Products & Production in the past 5 years



Crops & Vegetables

In the heat of summer, participants and volunteers sowed carrots. It was tedious manual labor, but they did it while enjoying conversation and encouraging each other. Thanks to their efforts, 2,148 kg of carrots were harvested from the end of November to December and 5,449 bottles of carrot juice were produced.

Livestock

In goat breeding, a new milking stand and grass rack (a stand for holding grass for feed) were rebuilt by the participants. As part of the 50th anniversary project, attractive information boards were installed in front of the barns and pastures to explain and illustrate livestock production.

FEAST (Meal Service)

- Many of the participants' individual projects involved food processing. Participants, volunteers, and staff worked together in an atmosphere of teaching and learning from each other to create such things as bread, dried vegetables, pickles, jam, tomato sauce, and goat cheese.

- Many people came in and out of the kitchen every day. Besides making meals, they came to the kitchen to learn, have fun, and make the best use of the ingredients. The year 2023 was supported by everyone's work.



Ikumi Kanamori
Foodlife (FEAST)

Total Number of Meals Served in the Dining Hall:

45,100 servings

Consumption of Main Ingredients:

Rice	4,689 kg
Wheat	925 kg
Soy beans	47 kg
Onions	1,026 kg
Pork	1,102 kg
Chicken	290 heads
Eggs	24,000 eggs
Goat milk	563 ℓ

Purchased from outside:

\$3,841
9 cents per meal
(Japanese national average: \$1.58)

* Calculated based on the Ministry of Internal Affairs and Communications' 2023 Household Survey, where the average monthly food expense for a family of four is \$569. This amount is divided by 4, then further divided by 90 (assuming 90 meals per month).

Together with Supporters

Fundraising & Domestic Programs, Sales, Ecumenical Relations



Certificates of appreciation were presented to the significant supporters at the 50th Anniversary Ceremony

The 50th Anniversary Broadens Our Circle

Report from Japanese Supporters' Support



Yūko Emura
General Affairs

We would like to thank everyone who has shared in the work of ARI in various ways, including donations, postcards, help, and prayers.

- The 50th anniversary marked the first time that many people who have been interested in ARI or were once involved with ARI have supported us in the form of donations.
- In July, for the first time in four years, ARI participated in the NGO Village at the Fuji Rock Festival, appealing to a wide range of young people who are interested in social issues.



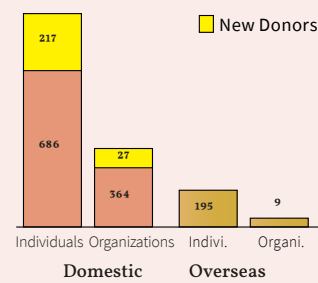
For more information on the 50th anniversary event, please see the Autumn 2023 issue of Take My Hand. (see QR code)



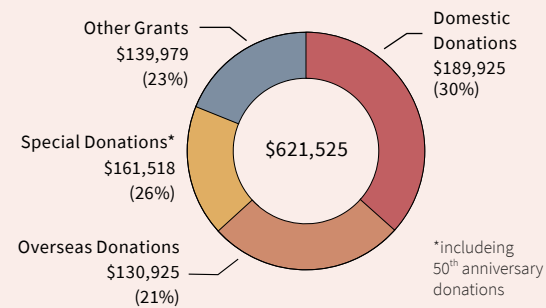
ARI tent at Fuji Rock Festival

Donation Results for FY2023 (April 1, 2023 - March 31, 2024)

We express our gratitude to the many donors who have helped support ARI and the Rural Leaders Training Program this year. We extend a special thanks to American Friends of ARI (AFARI), whose kind staff and volunteers ensure American donors can make the most of their support to our efforts. (For more information on individuals and organizations, including donations through AFARI, please see page 16.)



Number of Donors in FY2023 (including scholarship supporters)



Donation Amounts for FY2023 (excluding scholarships)

*including 50th anniversary donations

Regional Convening Program Launched by AFARI

Ecumenical Relations Report



Sherry DeLeon
AFARI Executive Director

AFARI launched the Regional Convening program to help bridge the learning at ARI into ARI graduate's communities and to expand the peer networks of rural leaders. This program brings together ARI graduates at ECHO conferences to help support both skills development and networking.

ECHO symposiums complement the teachings of ARI very well. The workshops and resources at ECHO build upon what was learned at ARI while providing technical and applied tools to contextualize activities to each graduate's region. The Regional Convenings also allow ARI graduates to connect with one another and other professionals in their sector.

Last year, AFARI offered a regional convening in Chiang Mai, Thailand. Nine graduates attended the convening. AFARI usually offers Regional Convenings one to two times a year, once in East or West Africa and once in Asia. To date, 17 ARI graduates from twelve different East African and Asian countries have attended ECHO Symposiums in East Africa and Asia.



The graduates at ECHO conference

"I enjoyed the conference because I remembered my home (ARI) with my fellow ARI graduates. We shared some experiences whilst at ARI as well as after ARI... The ECHO presentations touch all aspects of community development like agriculture, spirituality, nutrition, water, sanitation, environment, health, gender, youths, children and many more. We had a chance for a field visit whereby we managed to visit one of the organizations which is doing fish farming and sustainable agriculture."



Cecilia Mpigna
(*16 Graduate, Malawi)



ARI Shop at Harvest Thanksgiving Ceremony

Good Production of Sales Items

Sales Report



Hiromi Satō
Sales

Sales Results for FY2023 (April 1, 2023 - March 31, 2024)

- 1st Eggs - \$19,119 /approx. 96,500 eggs
- 2nd Pork - \$16,566 /1.8 tons, 45 pigs
- 3rd Juice - \$15,196 /approx. 5800 bottles
- 4th Cookies - \$12,318 /approx. 4,600 bags
- 5th Rice - \$9,901 /2.5 tons

Total of top 5 items - \$73,100 (85% of total sales revenue)

*Sales totals converted from Japanese Yen. Rate as of April 1, 2024: 1 USD = 151.61 JPY

- Carrot juice shipments for January 2023 were the highest ever, at over 6,000 bottles. We conducted promotions and had many people enjoy our products.
- The market price of eggs continued to rise, which made ARI's egg pricing seem low in comparison and led to an increase in demand during the fall and winter months. Due to steady activity in the poultry department, we were able to provide a stable supply of eggs throughout the year.

AFARI Individual Donors

Bev Abma
Tomoko Adachi
Linda Alders
Anonymous
Marie Bade
Eugene and Lois Bakko
Bill Beck
Margarete Bergmann
Martha Bessac
Gordon & Janet Blake
Jane Bock
Dan and Barbara Bohi
Nathan and Imogene Bolls
Colleen Bookter
Tim Boyle
Colleen Brooks
Stephen Brown
Robbie Buller and Chou Ly
Kathy Burton-Lewis
Kelly Byers and Thomas Wagner
Rev Andrea Chan
Diana Chapel
Barbara Coates
Elizabeth Cutting
Richard & Alice Dailey
Kenneth Dale
Sherry DeLeon
Mary Ann DeVries and Tom Schlife
Lois Dickason
Skip and Derry Dickinson
Muriel Dubois
Judy Dudley
Krista Dudley
Lillian and Richard Dudley
Fred and Carol Edmonds
Naarah Eichenauer
Elizabeth Ferdina
Marie Ferrarin
Karen Festa
Mark Ferrin
Nancy Fransen
Elsie Freudenberger
Carolyn and Eric Fure-Slocum
Martha Gale and Bob Carpenter
Jo and Ken Gelhaus
Brittany Gill
Rosalyn Gillisse
Donald and Melinda Goodick
Daniel and Hiroko Goto
Hunter Hale
Margaret Hardenbergh and Carl Wies
Pam and Souk Hasegawa
Nagi Hashiba
Jacqueline Haslett
Paul Hastings and Debbie Wissel
Thomas Hastings
Nelima Hazra
Lorna and Will Henkel
Alice Hikido
John E. Hill and Jeannette Dejong
David and Sandra Hirano

Renee Hoffman
Jill Hofmeister
Rev. Margret Hofmeister and Linda Erlanger
William F. Honaman
Cheri Howe
John Hoyt
Kristin Hubbard
Arthur and Gloria Imagire
Jack Iman
Keith Inouye
Nancy and Thomas Inui
Joan Ishibashi
Gabriele Kasper
Carol Kiemel
Marjorie Kinsey
Ronald and Elizabeth Kutscher
Rev. James Latimer
Jim and Gretchen Lewis
Margaret Logan
Hilary Lynch
Joyce Magee
Julia Manners
Ellen and Jim Marsey
The Reverend George R. Martzen
Dominic Massetti
Ken and Diane Matsuura
Patrick and Eunice McArdle
Michael McConnell
Barbara Mensendiek
Virginia and Francis Merritt
Mike and Donna Miller
Eleanor Moore
E. B. Moore
Michiko and Tom Morgan
John Moss
Cecily Moyer
Barbara L. Mueller
Emily Nelson
Roxane Netzler
Michael Neuroth
Kevin O'Toole
Stan and LoAnne Olson
Bill Pallett
Albert Papp
Donald Patenaude
Ruth Peeples
Monica Quill
Dave Ransom
Bob and Joyce Ray
J.B. Redding
Dr. Stefan Reiff
Susquehanna
Susan Rock
Patricia and Randy Roeser
Randy Romine
Priscilla and David Ruhe
Janet Russell
Mariellen Sawada-Yoshino
Lisa Schaechter
Janet Shoger
Anna and Pete Speiser
Mid and Carol Squier
Kenneth Stanford
Barb Stapleton
Phil and Valerie Stichter
James Swaim

Lee Swan
Mark Swanson
Evelyn and Donald Sweetser
Sachi Taketa
Stephen Tarr
Elizabeth Teague
Robert and Hazel Terhune
Susan Townsley
Jim and Kathryn Treece
Ellen Webster
Millicent M. Wetrich
Ben and Carolyn Whitehill
Anne Wire
Janet and Gene Witt
Angie Xiong
Roy and Frances Yamaki
Maki Yamane
Lawrence and Jean Young

AFARI Donor Organizations

Countryside Community Church, Omaha, NE
First Congregational Church in Amherst - UCC, Amherst, MA
Friendship Christian Reformed Church, Byron Center, MI
GlobalGiving Foundation
Michael McConnell
Harris United Methodist Church, Honolulu, HI
Javan and Neva Corl Family Foundation
John and Frank Sparacio Charitable Foundation
John Wesley United Methodist Church, Tallahassee, FL
Ogden Friendship House
United Methodist Church
Katherine T. Parker United Women in Faith
Takami and Friends Fund
San Luis Obispo United Methodist Church
The Blackburn Giving Fund
United Church of Dorset and East Rupert, Dorset, VT

AFARI Legacy Circle

Bev Abma
Martha Bessac
Ken Dale
Kathy Froede
Pam and Souk Hasegawa
David and Sandra Hirano
J.B. Hoover
LaVerne Kroehler
Ellen and Jim Marsey
John Moss
Marti Peterson
Bob and Joyce Ray
Craig Rice and Ameeta Sony
Lisa Schaechter
Kay Shanks
Jim and Kathryn Treece

Direct Donations to ARI

Domestic

Scholarships

Niikurakai
Tokyo Minami Rotary Club
JELA
United Church of Christ in Japan
Society of the Sacred Heart
Society of St. Columbus
National Christian Council of Japan
Asian Rural Welfare Association
Kubota Foundation
Wesley Foundation

Organizations

Morimura Homeikai
Ashikaga Bank International Cooperation Foundation All-Japan
Tomo-no-Kai Central Office
Takasaki Tomo-no-Kai
All-Japan Tomo-no-Kai Foundation
Tokyo-Kasumigaseki Lions Club
World Family Fund
Samariya-Kai
Risshō Kōsei Kai Nasu Church
Risshō Kōsei Kai Isshoku Peace Fund
Nasu Rindo-no-Kai
GIC Japan
Hiraku KK
Student Christian Fellowship
Hayabusa.com

Schools

Joshi Gakuin
Aoyama Gakuin High School
Aoyama Gakuin
ICU High School
Doremus School

Churches

Kumiai Church
Tokyo Trinity Church
Tokyo Union Church
ICU Church
Tokyo St. Albans Church
Nishinasuno Church
Soeurs Auxiliatrices Japon
Yokohama Union Church
Nakameguro Church

Overseas

Scholarships

Evangelical Lutheran Church of America
United Church of Canada
United Methodist Church - General Board of Global Ministries
American Friends of ARI (AFARI)

Churches

Evangelical Lutheran Church of America
United Church of Christ - Global Ministries
United Church of Canada
United Methodist Church - General Board of Global Ministries

An Open Place to Learn

Fundraising & Domestic Programs : Open Learning Program

"Here, there is an atmosphere where everyone is different and no one judges. I realized the importance of being true to oneself."



"ARI was accepting, receptive, and everyone was like 'soil!'."



"I had meaningful conversations with my peers. I was given guidance for my future."



"After taking care of the pigs, I cooked pork saying 'thank you' silently in my heart."



"I felt like I found answers to questions about how to live and what kind of person I want to become."

Study Camp Participating Organizations

USA: Goshen College, iLEAP **Japan:** English Farm, Ferris University, Bunkyo Gakuin University, Nihon College of Photography, ICU Reconciliation Forum, ICU Students Summer Camp, Jiyu-no-mori Gakuin High School, ICU High School, JELA, Meiji Gakuin University, 2002 ARI Alumni Association, Niiijima Gakuen Junior College, Keisen University, Student Christian Fellowship, Doshisha University Residency Study Group - ARI Project, University of the Sacred Heart (Online Camp), Salesian Shigakuin, ICU Religious Affairs Department, Kosei Gakuen Girls' High School, Hoshinomori Gakuen High School, JF Oberlin University, Kyoto Seika University, Doshisha University ARI Project, Permaculture Design Course, YMCA, ICU Students Spring Camp, Kyoai Gakuen High School

Photos:
1) High school students sharing insights from the camp
2) Campers learning about organic fertilizer
3) Making Bokashi fertilizer
4) Group work on food and life considerations
5) Making Indian curry with ARI ingredients
6) Experiencing the culture of Nagaland, India

Graduates at Work

Graduate Outreach



Graduates and their families who came to Japan gathered together

Graduates Join 50th Anniversary Celebrations

Graduate Outreach Report

Many wanted to come, and ARI would have loved to have them, but bringing hundreds of graduates from all parts of the world was financially and logistically beyond our ability. So, we did the next best thing. We invited graduates, as well as former volunteers and staff, to online reunions. Yet, some REALLY wanted to travel to ARI, so using their own resources, 11 graduates, with family members, flew to Japan to celebrate with us.

On their arrival, they observed how much the campus had changed, but soon found that the sense of community and diversity they had experienced as participants was still very much alive. The day after the event, the kitchen could be heard buzzing with activity as they prepared a feast for the community of local dishes from their countries. Some had brought spices and ingredients especially for this purpose.

But even more significant were the friendships formed between the participants and the graduates. They talked late into the night, sharing about ARI life of past and present. A special session was organized for the whole community, where graduates spoke of how they are using their ARI learning to benefit their people. It was a rare opportunity for inspiration and guidance from our precious graduate mentors.



Steven Cutting
Graduate Outreach



Graduate presentations on the days following the ceremony

ARI Graduate Village Visits

A close look at the communities of our graduates



Daneth (back left) and Saman (back right) discussing with members of the Women's Savings and Loan Group



Bamrung (center) and Jeanven (left) holding up the flag of the farmers' organization where Bamrung played an active role

Cambodia

Saman Chhan - 2017 graduate
Daneth Him - 2010 graduate

Thailand

Khanuengnit Polkhayan (Jeanven) - 2009 graduate
Bamrung Kayotha - 1989 graduate

Building trust with the women in community

Tropang Ampil lies about two hours northwest of Phnom Penh, Cambodia's capital. It is the home of Saman Chhan and her beautiful community. Saman and her family run a shop in the village and recently opened a restaurant. She has a strong entrepreneurial spirit which inspires the other women in the village.

Saman was introduced to ARI by Daneth Him, who started a women's savings and lending group here in 2013. On seeing the natural leadership talents of Saman, Daneth recommended her to ARI, and she joined the training program in 2017. Now Saman manages the group, but Daneth is still involved and visits regularly.

The ladies started by pooling their own money to create capital to lend to members for small income generation projects, such as raising chickens or starting a used clothing shop. Their success lies in the fact that Saman and Daneth spent much time building trust among the women. More than just a money institution, it is a place where they "share life concerns, sorrows, happinesses, and difficulties." "We have the same heart, same mind, same purpose," expresses one member. "We love each other."



Steven Cutting
Graduate Outreach

Passing on Organic Farming Practices

As Jeanven walks through her village in Northeast Thailand, nearly everyone calls out to her. Most are farmers or make traditional Thai crafts, such as indigo cloth dyeing and weaving on a hand loom. Jeanven helps them to find markets and gets orders from customers.

Several villagers belong to the Alternative Agriculture Network (AAN), for which Jeanven does administrative work as a volunteer. They have switched from conventional monocropping of rice to diverse types of organic farming. You can find many interesting products on their farms, such as durian, papaya, catfish, rice (of course), and even frogs, grasshoppers, and snails for eating! When one farmer was asked why he switched to organic, he replied that he used to be at the mercy of the rice market and was always poor. Now, he and his family work together to provide for themselves as well as the market, and they are happy!

Jeanven was introduced to ARI by her uncle, Bamrung Kayotha, who was a powerful activist. Putting others before himself, he fought hard for the rights of farmers, organizing large-scale protests that shaped more favorable government agricultural policies. He was also a strong promoter of organic farming, and many of the organic farms seen today are the result of his advocacy. At 73, he now considers himself retired and Jeanven is weaving her uncle's endless stories into a book of his life.

Financial Report

* Exchange rate as of April 1, 2024: 1 United States Dollar = 151.61 Japanese Yen

Balance Sheet

Assets	March 31, 2023	March 31, 2024
Current assets	\$370,769	\$453,817
Fixed assets	\$5,234,661	\$5,022,948
Property	\$4,929,598	\$4,680,262
Specified assets	\$302,365	\$339,987
Other fixed assets	\$2,697	\$2,697
Total assets	\$5,605,430	\$5,476,765
Liabilities		
Current liabilities	\$216,652	\$572,774
Fixed liabilities	\$1,035,617	\$796,040
Total liabilities	\$1,252,270	\$1,368,814
Endowment		
Total endowment	\$8,237,348	\$8,272,198
Net Assets		
Balance carried forward	-\$3,884,188	-\$4,164,247
Total net assets	\$4,353,160	\$4,107,951
Total liabilities and net assets	\$5,605,430	\$5,476,765

Cash Flow Statement

Balance carried over from previous year	\$331,588
Balance carried forward to next year	\$362,818

Auditors' Statement

The above duly audited financial statements have been prepared by the Fujinuma Tax and Accounting Service, Inc. and approved by the ARI auditors, Mr. Ôkubo and Mr. Murata. All the documents were properly kept and there were no irregularities.

May 8, 2024
Asian Rural Institute

久保 和宏
Tomohiro Ôkubo

村田 榮
Sakae Murata

Statement of Revenue and Expenditure

Operating Revenue	2023 Budget	2023 Actual
Educational activities revenue		
Scholarships and fees	\$264,194	\$336,628
Fees for issuing certificate	\$357	\$38
Donations	\$523,481	\$446,117
Subsidies for ordinary expenses	0	\$1,508
Sales and special services (FuRa)	\$151,679	\$183,113
Miscellaneous revenue	\$39,308	\$40,855
Total educational activities revenue	\$982,013	\$1,008,261
Total non-educational activities revenue	0	\$1,050
Total operating revenue	\$971,018	\$1,009,326
Operating Expenses		
Educational activities expenses		
Personnel	\$583,430	\$576,167
Education and research	\$210,860	\$192,195
Administration	\$458,240	\$482,115
Depreciation allowance	\$287,428	\$292,433
Total educational activities expenses	\$1,252,530	\$1,250,477
Total non-educational activities expenses	\$5,915	\$4,057
Special expenses	0	0
Total operating expenses	\$1,258,446	\$1,254,535

50th Anniversary Income and Expenses

Income	2023 Actual
50th Anniversary-designated donations	
Domestic donations	\$125,592
International donations	\$19,436
Total income	\$145,028
Expenses	
50th Anniversary-related expenses	
Whole-campus project	\$22,736
Costs of ceremony	\$3,770
Other expenses	\$18,126
Total expense	\$44,189
Net income	\$100,840*

* From FY2024 onward, this balance will be allocated to specific 50th anniversary-related projects.

Balance Sheet

Assets at the end of FY2023 were approximately \$4.98 million dollars, a decrease of \$314,000 (including \$234,000 in depreciation) from the previous year. As in previous years, we were able to continue to accumulate a total of \$35,600, including approximately \$20,000 in specified assets for retirement allowances and \$15,800 in specified assets for maintenance of facilities and equipment, to prepare for the future.

On the other hand, total liabilities decreased by approximately \$132,000 from the previous year to \$1,194,000. This was due to the repayment of borrowings (\$35,400) and redemption of school bonds (\$21,700), totaling \$57,300, and a decrease in the reserve for repair of reconstruction projects (\$39,600 for the exterior wall painting of the agricultural training building, etc.; -\$53,200).

Fund Balance

At the end of FY2023, funds payable carried over to the next fiscal year totaled \$330,142. Off-grid house construction as part of the 50th anniversary project (approx. \$14,800), installation of a ventilation system in the piggery and feed room as a measure against global warming (approx. \$7,700), and installation of drainage ditches were also carried out. Other expenditures included the purchase of a bus (\$24,600) and the repainting of the exterior wall of the agricultural training building (see above), but with the addition of factors such as the 50th anniversary fundraising and other income increases, the difference from the previous year was kept to -\$21,700.

Business Activity Income and Expenditure

Business activity income: approx. \$1,108,000
(previous year: approx. \$979,000, budget: approx. \$1,030,000)

Student fees: approx. \$242,000
(previous year \$327,000, budget approx. \$202,000)

There were designated tuition payments from 12 domestic organizations, 5 overseas organizations, and 1 individual in Japan. Unplanned scholarships (3) and the strong dollar/weak yen conversion rate also contributed to an increase of approximately \$39,600 over the budget.

Donation income: approx. \$43,300
(\$547,468 in the previous year, approx. \$50,100 budgeted)

Domestic donations: approx. \$190,000
Overseas donations: approx. \$130,000 (including American Friends of ARI)
Other grants: approx. \$134,000
Special donations: approx. \$162,000 (general \$16,500/ 50th anniversary approx. \$145,000)

Incidental business income: approx. \$190,000
(previous year: approx. \$178,000, budget: \$170,000)

Although the value of ARI was reevaluated and overall prices were revised, the program has become more viable and participants and guests are more satisfied with the program. Overall, revenues were at record highs, 112% of budget and 107% of the previous year's level.

Business activity expenditures Approximately \$1,290,000

(approx. \$1,220,000 in the previous year, budgeted at \$1,310,000)

Expenditures were almost in line with the budget, with approximately \$33,000 for the 50th anniversary commemorative project and a background of soaring travel expenses for overseas students and gasoline and other utility costs.

Overall, we were able to finish close to our budget. We would like to express our sincere gratitude to everyone who supported us and ask for your continued guidance and support.

(Kaori Sakuma, General Manager)

Invest in Rural Community Leadership!

Please consider a continued donation to ARI to ensure participation in the Rural Leaders Training Program for a new generation of rural leaders.

All US-based donations are handled by our partner, American Friends of ARI.

For a tax-free donation for US taxpayers, please use one of the following:

Donation via check

AFARI
2028 E Ben White Blvd
Suite 240-9000
Austin TX 78741

Online donation
via credit card
<https://www.afari.net/>



Curriculum (* Special Lecturer)

Leadership Courses
 Leadership at ARI
 Servant Leadership
 ARI History and Mission
 Participatory Learning and Action
 Independent Study
 Presentation Skills
 Time Management
 Facilitation Skills
 Effective Feedback
 Religion and Rural Life

Tomoko Arakawa
 Tomoko Arakawa, Yukiko Oyanagi
 Tomoko Arakawa
 Tomoko Arakawa, Yukiko Oyanagi, Manosi Abe Chatterjee
 Yukiko Oyanagi
 Yukiko Oyanagi
 Timothy Bernard Appau
 Yukiko Oyanagi, Manosi Abe Chatterjee
 Manosi Abe Chatterjee
 Jonathan McCurley, Timothy Bernard Appau, *Debora Sinaga (1990 graduate, 1996 TA from Indonesia, HKBP)

Report Writing
 Who is a Rural Leader?
 Women’s Health and Hygiene
 Peace & Reconciliation
 Fundraising
 Dignity Workshop
 Ashio Copper Mine & Shozo Tanaka

Manosi Abe Chatterjee
 Steven Cutting
 Kathleen Froede
 *Keiko Holmes (Agape World)
 *Sherry DeLeon (AFARI)
 *Jeffrey Mensendiek (J.F. Oberlin University)
 *Tatsuo Sakahara (NPO Tanaka Shôzo University)

Sustainable Farming Skills

Organic Farming
 Crops & Vegetables
 Rice Cultivation
 Livestock
 Chicken Raising
 Disease Control of Livestock
 Dangers of Chemical Agriculture
 Natural Farming in Tropical Areas
 Alternative Marketing Systems
 Biogas Workshop
 Potential of Forestry and Satoyama
 Agricultural Technique
 Livestock Technique
 Meat Processing

Osamu Arakawa
 Osamu Arakawa, Masanobu Sakurai
 Osamu Arakawa
 Takashi Otani
 Timothy Bernard Appau
 Takashi Otani, Timothy Bernard Appau
 Masanobu Sakurai
 *Shimpei Murakami (Self Sufficient Life)
 *Reina Tomatsu (Kinoshijuku Farm)
 *Mamoru Kuwabara (NPO Fudo)
 *Tetsuya Tsukamoto (Tochigi Conservation Corps)
 Osamu Arakawa, Masanobu Sakurai
 Takashi Ôtani, Timothy Bernard Appau, Ryô Maki
 Takashi Ôtani, *Hideo Koide (Neu Frank Nasu)

Development Theory

Nutrition
 Mutual Aid Theory
 Gender Theory
 Localization
 Mutual Aid Theory
 Nasu Canal and Rural Development
 Climate Change Education
 Japan's Organic Farming Movement
 Japan's Discrimination Issues

Ikumi Kanamori
 Yukiko Oyanagi
 Tomoko Arakawa
 *Yôji Kamata (NPO Ancient Futures Association Japan)
 Yukiko Oyanagi
 Yukiko Oyanagi
 *Yoshiyuki Nagata (University of the Sacred Heart)
 Yukiko Oyanagi
 Yukiko Oyanagi, Manosi Abe Chatterjee

Graduate Seminar

Organizational Sustainability

*Wesley Lingga (1993 graduate, 1999 TA from Indonesia)
 *Manbud Samai (2018 graduate from Siera Leone)

Japanese Language and Culture

*Kyôko Ogura, *Chieko Arakawa

Organic Farming Training

Crops & Vegetables: Bokashi making, compost making, collection and utilization of indigenous micro-organisms, fermented plant juice, fish amino acid, water-soluble calcium, natural farming, rice husk charcoal, seed collecting, seedling nursing with soil blocks
 Livestock: Pigs (artificial insemination, delivery, castration), chickens (brooding), livestock disease control, feed formulation, fermented feed production, animal raising with fermented floor
 Meat processing: sausage, ham, jerky

Field Management Activities

Group farm management (crop & vegetable cultivation, livestock management)
 Foodlife Work (farm work and food preparation for self-sufficiency)
 Group leadership system

Field Trips

Agriculture-Related Tours and Study

Tochigi: Kinoshijuku, Manmaru Farm, Donkame, Hidamari Farm, Furuya Farm, Rice Research Center
Saitama: Muneo Kaneko, Ryuichi Tashita, Mamoru Kuwabara
Yamagata Okitama Area: Tsutomu Watanabe / Misako Watanabe, Yoshihide Kanno, Nagai City Rainbow Plan Promotion Council, Kirisuto-Kyo Dokuritsu Gakuen High School, Iwao Kurosawa, Takahata Sustainable School (Michiko Akitsu), JA Yamagata Okitama Agricultural Cooperative, Kawanishi Town Hall (Mayor Toshiharu Harada)
Yamagata Shonai Area: Koichi Kato, Kazuhiro Soma, Masakazu Shido, Naoki Sato, Shonai Cooperative Farm, JA Tagawa Agricultural Administration and Farming Division, Shonai Church Nursery School (Toshihiko Yazawa), Tsuruoka City Eco-Town Office, Kisaku Onodera, Mimasu Genki Village, Tsuruoka City School for Training Agricultural Entrepreneurs (SEADS)
Iwate: Toru Sakawa

Community Exchange Tours

Nasunogahara Museum, Ashio Copper Mine Pollution Case Study (Matsuki Village ruins, Ashio Copper Mine smelter ruins), Watarase Basin, Utsunomiya North High School, Nishi-Nasuno Kindergarten

Western Japan Study Tour

Tokyo: Theological Seminary for the Rural Mission
Shizuoka: St. Christopher HS/JHS, St. Christopher Gakuen University, Shinobu Yamanaka
Mie: Aino Gakuen High School
Osaka: Osaka YMCA, NPO Kamagaski Shien Kiko, Nojukusha Network, Kansai Okinawa Bunko, Korean NGO Center, Kibogaoka Church
Kumamoto: Nahoko Osawa, Karatachi, Minamata Disease Museum, Hope Future Minamata, Tetsuro Yoshimoto
Hiroshima: Hiroshima Peace Memorial Museum

Other Training

Community work (rice transplanting, rice harvesting, forest management, etc), activities to promote spiritual growth (morning gathering, consultation, reflection paper, reflection day), oral presentations, Harvest Thanksgiving Celebration, international fellowship programs, observation trips, Rural Community Study Tour, Western Japan Study Tour, etc

Staff

Tomoko Arakawa Osamu Arakawa Yukiko Ôyanagi Kaori Sakuma-Vero Jack Lichten Kathy Froede Manosi Abe Chatterjee Kai Shinoda Steven Cutting Junko Tanaka Timothy B. Appau Jonathan McCurley Satomi McCurley Masanobu Sakurai Mariko Yamada (~Aug) Takashi Ôtani (~Dec) Ikumi Kanamori Ramon Labial (~Feb 2024) Yûko Emura Yuka Sugisaki Kaori Andô Ayako Izawa (Nov.-) Takashi Yamashita	Director Associate Director, Education Director, Farm Manager (Foodlife) Associate Director, Curriculum Coordinator General Manager (General Affairs) Ecumenical Relations Ecumenical Relations (50th Anniversary) Curriculum (Admissions, Curriculum) Curriculum (Admissions, 50th Anniversary) Curriculum (Graduate Outreach) Curriculum (Library) Chaplain, Curriculum (Community Life), Foodlife (Livestock) Chaplain, Curriculum (Community Life) Curriculum (Community Life) Foodlife (Farm Manager) Foodlife (Crops & vegetables) Foodlife (Livestock) Foodlife (FEAST) Foodlife (FEAST) General Affairs (Supporter’s Support, General Affairs) General Affairs (Accounting) General Affairs General Affairs Fundraising & Domestic Programs (External Programs & Nasu Seminar House Manager) Fundr. & Dom. Pr. (Nasu Seminar House Caretaker) Fundr. & Dom. Pr. (External Programs)(~Dec.), Foodlife (Crops & vegetables)(Jan. 2024~) Fundr. & Dom. Pr. (Sales, PR) Fundr. & Dom. Pr. (Food Processing) Fundr. & Dom. Pr. (Supporter’s Support, PR)
Ruyipa Vero Eri Okada	
Hiroimi Satô Masayo Fukushima Raku Izawa	

Outsourcing Staff

Thomas Itsuo Fujishima (~June) Jun Yagisawa	Branding, ID System Designer, Media Designer Media Designer, Editor
--	--

Volunteers

Commuting Volunteers

Food Life (Farm): Tetsu Hayashi, Sachito Watanabe, Michelle Beily, Yukina & Kimi & Kana Kuroda
Foodlife (FEAST): Yûko Kimura, Kyôko Takamura, Chieko Arakawa
Fundr. & Dom. Pr. (Sales, PR): Mie Inomata, Shigeaki Kashiwaya, Mayuko Sugita, Norie Horiuchi, Takashi Miyake, Christy Appau, Chizuru Azuma, Rebecca Namiki, Sayuri Konishi, Keisuke Konishi
General Affairs(Maintenance): Masuo Shimizu, Taku Fushimi, Yukio Ide
General Affairs(Management): Takayuki Hayasaka
General Affairs: Nozomi Hiratsuka

Bequerel Center

Mineki Nishikawa, Shôhei Fujimoto (& Sales)

Long-Term Volunteers

Yamato Tamaki, Nico Toyonome, Declan Mead, Yuki Tsukamoto (Farm), Henning Nalbach, Aaron Beerlage (Farm, Ecumenical), Jannik Friedrich, Haruki Sato, Kurumi Ohtani (Farm, PR), Russell Orner, Jonathan Penzkofer (FEAST, Farm), Emmi Harner, Selina Scheuenbrand, Natasha Arnold (FEAST, Admissions), Marie Kessler (FEAST, Graduate Outreach), Claire Orner (Ecumenical, FEAST, Farm), Moe Yamashita (FEAST, 50th Anniversary), Han Sakawa (Farm, 50th Anniversary), Megan Ruppel (FEAST, Curriculum), Angeline "Suzu" Choong (PR, Ecumenical, Farm)

Board

Board Rev. Toshimasa Yamamoto	Former Professor, Kwansel Gakuin University
---	---

Vice Chair

Hideharu Kadowaki	Special Advisor and Senior Fellow, The Japan Research Institute, Limited.
-------------------	---

Board of Directors

Tomoko Arakawa Rev. Yoshiya Ushiroku Rev. Hikari Kokai Chang Noriaki Satô Yoshiyuki Nagata Rev. Eiji Yahagi	Director, Asian Rural Institute Pastor, UCCJ Reinanzaka Church Representative Director, Wesley Foundation Special Advisor, Hotel Sunvalley Nasu Professor, University of the Sacred Heart Pastor, NSKK Shimodate Anglican-Episcopal Church
Masahiko Yamane	Former Managing Director, Kagawa Education Institute of Nutrition
Rev. Masaoki Hoshino	Former Pastor, UCCJ Aikawa Mission

Auditors

Tomohiro Ôkubo Sakae Murata	Fujii Industries Inc., Operating Officer The Y’s Men’s Club of Nasu
--------------------------------	--

Board of Councilors

Osamu Arakawa Tomoko Arakawa Shinobu Awaya Takuya Iizuka	Associate Director, Asian Rural Institute Director, Asian Rural Institute Lawyer, Tono-Tanami Law Office Chair, Committee of Mission of UCCJ Kantô District; Pastor of Ryûgasaki Church Parish Priest, Roman Catholic Diocese of Niigata
Rev. Kôshi Itô	Member of Central Committee, National Tomo no Kai; Member of Yokohama Tomo no Kai Provincial, Society of the Sacred Heart Japan Province
Sachiko Iwaya	Board Chair, Legend Partners Ltd. Associate Director, Asian Rural Institute Special Advisor and Senior Fellow Archbishop, Roman Catholic Archdiocese of Tokyo
Mieko Uno	General Manager, Asian Rural Institute Pastor, The Korean Christian Church in Japan, Sapporo Church
Tomohito Ebine Yukiko Ôyanagi Hideharu Kadowaki Rev. Isao Kikuchi	Professor, University of the Sacred Heart Pastor, UCCJ Nishinasuno Church Former Pastor, UCCJ Aikawa Mission Representative Director, NPO Kino Kankyô Staff, Asian Rural Institute Former board member, Kagawa Education Institute of Nutrition NGO/NPO Consultant CEO, Second Harvest Japan
Kaori Sakuma-Vero Rev. Chun SangHyun	
Yoshiyuki Nagata Rev. Ban HyungWook Rev. Masaoki Hoshino Ikkô Marutani Takashi Yamashita Masahiko Yamane	
Sarajejan Rossitto Hitomi Yokote	

Advisor

Hôichi Endô	Former Staff, Asian Rural Institute
-------------	-------------------------------------



Class of 2023

Rural Leaders Training Program () Sending organization

- Bangladesh** 1 **Mithun Boiragee** (Somaj Kollan Jubo Songho (SKJS) (Social Welfare Youth Association))
- Cameroon** 2 **Veranso Benjamen Litika** (Rural Transformation Center)
- 3 **Claris Suinyuy Buhven** (Rural Women Development Center)
- Ecuador** 4 **Joselin Carolina Coyago Tallana** (Sociedad de Amigos Nino Ecuatoriano (SANE))
- Haiti** 5 **Louis-Taire Pierre** (Haiti-no-kai (Association Haiti))
- India** 6 **Tamreichan Zimik** (Community Educational Center Society)
- 7 **Meidinlung Gangmei** (Indigenous Women and Children Foundation)
- Indonesia** 8 **Yohanes Ali** (Bernadus Palus Church)
- 9 **Angela Ratna Sari Biu** (Sant Maria Immaculata Parish)
- 10 **Yeni Eria Togatorop** (Huria Kristen Batak Protestan (HKBP))
- 11 **Jakob Siringoringo** (The Indigenous Peoples Alliance of the Archipelago)
- 12 **Jontra Martua Purba** (Gereja Kristen Protestan Indonesia (GKPI))
- Liberia** 13 **Darkpon Dolokelen** (Restoration of Educational Advancement Programs)
- 14 **Helena Koko Ben** (Voinjama Free Pentecostal Church Health Center)
- 15 **Mary S. Ylatun** (United Methodist Rural and Agricultural Development Program)
- Myanmar** 16 **Gu Tar Hu** (Waing Maw Lisu Baptist Association (WLBA))
- 17 **Fung Kyaw Set** (Naga Public Organization (NPO))
- 18 **Saw Hser Moo** (Rev. Dr. R. L. Pokey Memorial Theological School)
- 19 **Pa Maung Lia** (Community Association for Rural Development (CARD))
- Nepal** 20 **Sangita Chaudhary** (Sister Home Organization (SHO))
- Nigeria** 21 **Kaliyat Bilkisu David** (Evangelical Church Winning All (ECWA) Women Fellowship)
- 22 **Pwadadi Raymond** (Catholic Church Women Fellowship Group)
- Sierra Leone** 23 **Aminata Conteh** (Evangelical Lutheran Church in Sierra Leone)
- Uganda** 24 **Aron Nebin Otim** (St. Jude Children's Home)
- 25 **Richard Tumwesigye** (St. Patrick's Center for Integral Development (SPACID))
- Zambia** 26 **Geoffrey Mbewe** (Ecumenical Development Foundation)

Advanced Training Course () year graduated from ARI

- India** 27 **Mario John Paul Rebelo (2014)**
(Missionaries of St. Francis Xavier, Society of Pilar)
- Japan** 28 **Ayu Suda (2022)**
- 29 **Nozomi Nakashima (2022)**

Asian Rural Institute
Rural Leaders Training Center



That We May Live Together

address Tsukinukizawa, 442-1
Tochigi, Nasushiobara
329-2703 JAPAN

email info@ari.ac.jp
tel 0287-36-3111
fax 0287-37-5833

website www.ari.ac.jp
Facebook Asian Rural Institute
Instagram @asian_rural_institute