



Forty Years of
Walking with
Grassroots
Leaders



the history of
ARI 1973-2013

Greetings

Toshihiro Takami, Honorary Director

Words of Thanks

Ever blessed, ever thankful! I am ever so grateful!

The progress that ARI has made thus far is evidenced in the fact that it is noticeably marked today in a variety of local maps. Accumulated efforts of numerous people, literally hundreds and thousands of them, have made the Community of ARI grow to this stage. For that, I am ever grateful.

This may be extreme, but I believe that the prayers and wishes of people from all over the world united and came to nurture ARI. Thank you for your prayers.

In its path to become such a community, ARI was constantly visited by supporters - tens of thousands of them! It owes many thanks to all the volunteers, members of staff, neighboring community people, people in Tochigi Prefecture, and many others. There are those who visited us only once. There are others who came and stayed as long-term volunteers. There are yet others who self-assigned themselves in the kitchen for the duty of meal preparation every day. Thank you everyone.

I sincerely pray that ARI will continue to be supported by all those people so as to be able to continue to carry out its mission of serving people of the world, especially the farmers.



Preface

I am grateful that we are able to publish the ARI history booklet, “Forty Years of Walking with Grassroots Leaders,” as part of the events to celebrate its 40th anniversary. Toshihiro Takami, the founder always tells how the work of ARI is an investment in persons. I am ever so thankful for the fact that this institute has been able to send more than 1,200 graduates back to their various home countries in Asia, Africa and other parts of the world over the past four decades. It is our wish that ARI continues to train local community leaders so that they may serve better their own people at the grassroots level.

In addition, we cannot forget that, in the history of 40 years, there has always been complete cooperation of so many people from the foundation to this date. I must keep in mind that the history of ARI rests upon each and every effort of support of those people.

Finally, I thank God, who always led us over those years through the trials and tribulations of the wilderness such as financial crises, the earthquake disaster and the radioactivity damage.

Kenichi Otsu, Board Chair / Director



Table of contents

1	<i>Preface</i>	16	<i>History, 2003 - 2012</i>
2	<i>Historical Developments Leading to the Foundation of the Asian Rural Institute</i>	19	<i>In remembrance, companions of ARI ⑤</i> <i>Dr. Akira Niwa</i>
4	<i>History, 1973 - 1982</i>	20	<i>The ARI Graduates</i> <i>Graduates of the South East Asia Course 1960 - 1972</i>
7	<i>In remembrance, companions of ARI ①</i> <i>Rev. Haruo Fukumoto</i>	21	<i>Graduates of the Rural Leaders Training Course 1973 - 2012</i>
8	<i>History, 1983 - 1992</i>	26	<i>Graduates of the Advanced Training Course 1986 - 2012</i>
11	<i>In remembrance, companions of ARI ②</i> <i>Mr. Shuhei Murakami</i>	27	<i>Board of Trustees · Auditors · Councilors · Staff ·</i> <i>ARISA Directors · AFARI Directors</i>
12	<i>History, 1993 - 2002</i>	28	<i>Publishing Note</i>
14	<i>In remembrance, companions of ARI ③</i> <i>Missionary Gretchen DeVries</i>	29	<i>The theme song of ARI: “Take My Hand”</i>
15	<i>In remembrance, companions of ARI ④</i> <i>Rev. Um Tei-sung</i>		



SEAC students with Toshihiro Takami (left, circa '62-64)

Historical Developments Leading to the Foundation of the Asian Rural Institute

At its inaugural assembly, held in Kuala Lumpur in 1959, the East Asia Christian Council (EACC)¹⁾ unanimously adopted a resolution, among others, which stated that education and training of rural pastors was an urgent task in contributing to postwar rehabilitation of Asian countries, and urged the Japanese churches to carry out the mission. After that, EACC formally requested the United Church of Christ in Japan to realize the contents of the resolution.

In response to the request, in April 1960, the following year, The South-East Asian Christian Rural Leaders' Training Course (SEAC)²⁾ was newly established on the campus of The Theological Seminary for Rural Mission (Machida City, Tokyo). Establishing the course within a theological seminary was meant to signify in a concrete manner the confession of war responsibility by the Japanese churches, in light of their support toward the military government's actions during WWII, and their atonement for such sins committed. At the beginning the participants were Japanese as well as rural pastors and evangelists mainly from Korea and Taiwan. As time went on, however, the course started accepting participants from other Asian countries such as the Philippines and Thailand. In this history, we could see a new philosophy of development assistance sprouting and evolving from the conventional way of thinking of 'sending Japanese agricultural technicians to Asian countries and having them engage in rural development projects,' to a new approach of 'training local workers there and assisting them after the training so that they would be able to continue their activities after returning home.'

Under the climate of rapid economic growth, the then Japan's agricultural policy, as reflected in the newly adopted Agricultural Basic Law, was to push forward modernization drives by scaling up production following the European and/or American practices. Rather than following this trend of the times, Toshihiro Takami, the second director of the course since 1962, opted to establish a training program that would be

more relevant to the rural realities of Southeast Asian countries. He visited around to practical farmers with participants and positively adopted traditional farming techniques and arts of living in Japan. Opportunities developed in the meantime of exchange with local farmers at the grassroots level, thus "postwar reconciliation" began to take its concrete shape, gradually and in many different forms as well.

In 1963, the Theological Seminary for Rural Mission made a fresh start under the name of Tsurukawa Rural Institute. Seven years later, on the occasion of its reorganization in 1970, SEAC, which used to be an independent training center in the seminary, was incorporated into the total institution and became 'Southeast Asia Course' (equal to two other courses, category-wise, namely, theology and childcare). Faced with a financial crisis that happened later on, however, the seminary could not help but downsize itself (such as discontinuing the childcare course and drastically cutting the number of staff). Fortunately, the Southeast Asia Course survived this restructuring crisis along with the theology course.

Meanwhile, (formerly known as) East Pakistan caught the world's attention. It was an area that suffered cyclone disasters almost every year, but the damages in 1970 and 1971 were particularly serious, and the World Council of Churches (WCC) appealed for an emergency action to its member churches in order to relieve refugees, reportedly exceeding 8 million in number at one point. The Service Department of the National Christian Council in Japan (NCCJ) launched a refugee relief campaign, beginning November 1971³⁾, under the motto 'That We May Live Together.' The NCCJ decided to dispatch T. Takami (associate director of its Service Dept. and director of The Southeast Asia Course) together with Kazuho Makino (a staff member of The Southeast Asia Course, who was in India at that time) to the affected area. During the stay there, they cooperated in



The first bus for study trips (about 1971)



Ken Muto, principal of the Theological Seminary (fifth from left) with the Takamis (right from him, early 1960)

the drafting of a Post-cyclone revival plan led by the WCC.

Later in December of that year, East Pakistan became an independent nation, called Bangladesh, after the Indo-Pakistani wars. Relief workers happened to ‘discover’ about 300 power tillers stacked up in a certain harbor warehouse. It was learned later that before independence, they had been imported by a government agency from Japan. Then a local Catholic relief organization purchased the power tillers and sought Japanese churches out for sending operation instructors for the tillers. The NCCJ Service Department (Protestant) and Caritas Japan (Catholic) organized a joint committee and dispatched 50 young men to Dhaka in April 1972. T. Takami led the group first and later it was taken over by K. Makino and Hajime Kikuchi, also a SEAC staff member. At the time when even the term ‘NGO’ was not commonly used, this group was counted as one of the pioneers of international cooperation projects by private organizations

Successfully completing their duty by the end of July that year, those young men came home. Many of them had a strong feeling that they did not want to end their experience as just a one-time, temporary relief activity. Instead, they began to grope for building a sustainable relationship with overseas peoples. While, at the same time, the NCCJ was also on the verge of creating a cooperation/assistance philosophy of a new breed. In one of the official documents released later that year, it states: “What kind of cooperation can we do without disturbing the self-reliance of local people? In order to train agricultural leaders, we plan to invite several young men from Bangladesh.”⁴⁾ The second act of a long story of ‘That We May Live Together’ was about to begin.

In those days, Tsurukawa Rural Institute could not help but downsize itself due to financial circumstances as mentioned above. Because of that, those who were with SEAC led by T. Takami began to look for a new avenue to carry out the origi-

nal mission of the training center. After several land-scouting trips to various locations, they finally decided to settle on the present site in Nasushiobara City, in the north of Tochigi Prefecture, to establish The Asian Rural Institute. In this place, there were devoted supporters who shared the same vision, and who accepted and hosted SEAC participants in the past for on-the-job farming practice and other live-in training in their communities. Thanks to the help of those supporters, from selecting and acquiring the necessary property to completing all the paper work required for authorization by the prefectural government office, ARI - Southeast Asian Rural Leaders Training Center was on its way to establishment. On September 16, 1972, the first founders’ meeting was convened. (From this point onward, Sept. 16 was designated as the Foundation Day of ARI.) In January of the following year, the application was duly filed with the governor’s office, and in March, ARI was formally authorized under the category of a vocational school.

Reference: At its Fourth General Assembly (Uppsala, 1968), the WCC called on its member churches throughout the world to become ‘servant churches’ for rural people, the urban poor and so forth who had been trifled with sudden changes of the world economy. For that purpose, the Rural Agricultural Mission (RAM) was created with education and training of rural leaders in mind under the Division of World Mission and Evangelism (DWME). This was in 1973, the same year when ARI was established.

1) Presently, Christian Conference of Asia (CCA)

2) South-East Asian Christian Rural Leaders’ Training Course (commonly called SEAC)

3) The goal of the campaign was to raise 10 million yen. The average starting salary of new college graduates at that time was a little less than 40,000 yen per month.

4) From ‘Refugee Relief Campaign Report’, Nov. 1972.

history



1973-1982

1972 SEPT The following people organized the ‘Asian Rural Institute Founder’s Assembly’ and the first meeting was held at the Japan Christian Center in Tokyo on September 16. (From this point onward, September 16 has been designated as Foundation Day of ARI.) Haruo Fukumoto, Masayoshi Gunji, Walter Shore (Chairman), Toshihiro Takami, Tadashi Igusa, Gretchen DeVries, Masayoshi Arisawa, Kazuho Makino, Hajime Kikuchi, Shigeko Tachibana. The meeting was then followed by the preparation work such as land acquisition and construction of school buildings.



1973 MARCH Acquired the authorization of an ‘Educational Foundation - Asian Rural Institute’ endowment statute and of establishing the ‘Southeast Asian Rural Leaders Training Center’ from the Governor of Tochigi Prefecture. **APR** Held the first board meeting and made a budget and a business plan, as well as enacted rules and regulations regarding the endowment statute and bylaws. Founding Board of Directors: Toshihiro Takami (Board Chair), Masaaki Nakajima, W. Shore, Hajime Kikuchi, Masayoshi Gunji, Haruo Fukumoto, Arthur Kamitsuka, Hajime Ogawa (Auditor), Michio Oyamada (Auditor) **MAY** On the 14th, held the school establishing ceremony and the first opening ceremony for the training. Completed by that time were the main building (2 stories), the workshop building (2 stories) and four staff houses (one-story each). Staff members at the time of establishment: Toshihiro Takami (Director), Hajime Kikuchi (Assistant Director) Kazuho Makino (curriculum/crops), Masayoshi Arisawa (accounting/livestock), Kiyoshi Nagashima (livestock/maintenance), Shigeko Tachibana (general affairs/ accounting), Tadashi Igusa (part-time), G. DeVries (as she had been on home assignment in the US, her actual work at ARI started in the following fiscal year.)

Country breakdown of the first class (16 participants): India (1), Thailand (1), South Korea (2), Malaysia (3), Bangladesh (3), Japan (6: 4 of them were consigned trainees from Rissho Kosei-kai)

[The training began with Radio Exercise at 6:30 a.m., followed by various farm works on campus. Examples of the regular lectures in those days are as follows; “Leadership in the third world”, “Current issues”, “Rural community and faith”, “Theory and practice of cooperatives”, “Food production for self-reliance.” Besides lectures, various visitations and observation trips were conducted on one day each week, such as to neighboring farmers,

schools, institutions of agriculture-related industries, town offices, facilities of small-scale home industries, agricultural experiment stations, research organizations, etc.] [Rissho Kosei-kai, a new Buddhist sect, rendered both financial and in-kind support in the early days of ARI.] **JUNE** Participants were invited for home stay in the Tokyo area, sponsored by the National Women's Association of the United Church of Christ in Japan. The home stay program continues up to this day.



The class of 1973

JULY A total of about 400 people visited ARI for such programs as summer work camps and seminars. **JULY-AUG** Live-in practical farming training (6 weeks) was conducted with help from neighboring farmers. Training in poultry and pig raising started. **OCT** On the 27th, the first Harvest Thanksgiving Celebration (HTC) was held (welcoming approximately 1,000 visitors). HTC has been an annual event in October up until now. Its total program management, including planning, budgeting, human resource placement and so forth, has been recognized as an important part of the training. **NOV** From the 4th to the 12th, the Western Japan Study Tour was conducted, using ARI's own microbus to Osaka. On the way there, the participants visited farms, schools, institutions of agriculture-related industries, facilities of small-scale home industries, agricultural experiment stations, research organizations, factories, churches and other religious organizations. **DEC** On the 10th, the first Commencement Service was held. Seven graduated. (After the continuing training, 5 more participants completed the course.) Request for Christmas donations was sent out to individuals, Christian churches and organizations nationwide.

1974 APR Began organic vegetables and crop cultivation. **MAY** At the second board meeting, a resolution was adopted to thank W. Shore, one of the founding board members. For 2 years from then, he was Director Emeritus. (He returned to the US in August of that year. Mr. and Mrs. Shore then started granting scholarships to participants.) **JUNE** Accepted training for the new staff members of the National Council of YMCAs. (Several years later, ARI came to receive various kinds of needed support from them, working at different city Ys, on such occasions as the West Japan Study Tour.)

1975 JAN Fellowship with the Takahata Organic Agriculture Society (Yamagata Pref.) started through the practical training of a Lao participant. **SEPT** The ARI Foundation was established in the State of California, USA. Completion of the women's dormitory (10 rooms to accommodate 20 residents). Started accepting trainees of the Tochigi Overseas Technical Workers' Training Program (A total of 7 people up to 1981). **NOV** Fellowship with Tokyo Union Church started with the home stay program. (Continues up to this date). [In 1975, a call was presented in the ARI publicity paper "Ajia no Tsuchi" (or, The Soil of Asia, literally) stating "Let us create a world in which human life and the food that sustains it have the highest value – That We May Live Together".]



1976 APR Accepted 2 participants from Africa for the first time (from Nigeria and Ghana), with the scholarship support of the World Council of Churches (WCC). Regular morning and evening chores attended by all participants and staff members were understood as an important part of the training. **JULY** Completion of the dining room building. **NOV** On the 21st, the ARI Supporters' Association (ARISA) held its Inaugural General Assembly at the Japan Christian Center in Tokyo. The first chairperson: Kohei Goshi.

1977 MAY Tomio Muto took office as the new chairperson of ARISA. **JUNE** Noboru Iwamura, a medical missionary to Nepal sent by Japan Overseas Christian Medical Cooperative Service (JOCS), came to ARI for a special lecture. Hajime Ogawa, an auditor, resigned, and Kentaro Buma succeeded. **JULY** Nalini Jayasuriya, a Sri Lankan painter, finished her work, titled "Harvest" on the wall of the office in the former main building. In September of the year 2012, it was transferred to the front entrance of the current Koinonia House. **OCT** A fellowship program with Kawanishi Jr. High School in the neighboring town of Kurobane began through the good offices of the Kurobane Rotary Club. (The Jr. High School was amalgamated into Kurobane Jr. High in 2005, yet the fellowship program saw no discontinuation till this date.) **NOV** For the first time, the Western Japan Study Tour visited Kagawa and Ehime Prefectures on Shikoku Island, then afterwards to Hiroshima. **DEC** Masayoshi Gunji resigned from the board and became Director Emeritus. Tokuji Tajima filled the post. Completion of the men's dormitory (20 rooms to accommodate 40 residents).



1978 MARCH The name of the training center was changed from “Southeast Asia Rural Leaders Training Center” to “Asia Rural Leaders Training Institute.” Hajime Kikuchi, Associate Director, went to California Polytechnic State Univ. for an extended study (until 1979, the following year). To cover the post, G. DeVries was assigned. **MAY** Exchange program with “Tamago no Kai” began (literally, “The Society of Eggs” . A consumer movement organization in Ibaraki Pref. carrying out organic farming, open space poultry farming and pig raising with fermented feed made from leftover food).

1979 OCT Keo Inthavongsa was enrolled as the staff in charge of crops cultivation. His family was the first Lao refugees officially accepted by the Japanese government and he was the first one to be officially employed in Japan.



1980 APR Began the processing and sales of carrot jam. **JULY** The first Northern Japan Study Tour, for a period of some 10 days (conducted until 1992). **OCT** Fellowship program began with Utsunomiya Kita High School, a governor-designated pilot school for international education and understanding. (The program continues till this date.)

1981 MAY Milking cows (the Jersey breed) were introduced from the Tsuchida Farm in Akita Pref. Thus, cow milk was included in the meal menu. **JULY** “Foodlife” was introduced as one of the core concepts for the training and announced in the ARI paper “Ajia no Tsuchi” . [FOODLIFE here is an ARI coinage, signifying inseparable relations between food and life.] **OCT** During the Western Japan Study Tour, the participants took part in “Asia Youth Cooperation Service Seminar” (at Kansai Seminar House in Kyoto).



1982 FEB A supporters group named the “American Friends of ARI (AFARI)” was established in the US. **APR** Two interns joined the ARI community from Sisters of the Visitation. **JULY** Began an exchange with the Shimosato Farm (managed by Yoshinori Kaneko, an organic farmer) in Saitama Pref. The first Asia Seminar/Work Camp sponsored by ARI itself was held from the 28th to the 31st. The main theme: “That We May Live Together – The issues of food.” 26 people participated. **AUG** Completed the 250-seat outdoor coliseum with the cooperation of the Nasu Group of the Anglican-Episcopal Church of Japan. **OCT** “ARI ecosystem (or, environmental conservation system) committee” issued an appeal at the 10th HTC as well as in “Ajia no Tsuchi.”



In remembrance, companions of ARI

共に歩んでくださった人々

Rev. Haruo Fukumoto

1927~2000

More than ten years before ARI started, Rev. Haruo Fukumoto, while studying at the Theological Seminary for Rural Mission, met Toshihiro Takami for the first time, who was the then director of The South-East Asian Christian Rural Leaders' Training Course (SEAC). Though very busy as pastor of Nishinasuno church, he made a great contribution to ARI from its founding to its overall management from this time onwards.

Mr. Toshi Kimata, the first director of SEAC, was the mentor of Rev. Fukumoto at the Seminary. Mr. Ken Muto, who served as the principal of the Seminary and the Moderator of the United Church of Christ in Japan (UCCJ) as well as the chairman of the National Christian Council in Japan (NCCJ), used to serve as pastor at Nishinasuno church for a period soon after the war. In retrospect, we see here an important part of the interpersonal connections which led to the foundation of ARI.

Besides his pastoral work, and management of the church's kindergarten, Fukumoto eagerly participated in ecumenical activities. While he participated in such activities as The Asia Christian Youth Conference (The Philippines, 1974) and The Asian Rural Life Study Group, he was also actively involved in mutual exchange ventures with churches in Taiwan and Korea, organized by the Tochigi District of the UCCJ.



Since the time of SEAC, Rev. Fukumoto had arranged the practical farm training for many participants together with Mr. Masayoshi Gunji, who ran an agricultural machinery business based in the northern area of Tochigi Prefecture.

According to Nishinasuno church records, it was in April of 1972 that T. Takami, director of SEAC, visited Rev. Fukumoto and had a consultation with him in regards to the establishment of ARI. Then, in September of that year, Rev. Fukumoto worked very hard with Mr. Gunji and other local leaders to finalize a land purchase contract for 15 acres (6 hectares) of land, where ARI is currently located.

For about half a year from the contract's conclusion, he did his best to gather financial support for the establishment of ARI to cover a list of initial costs, i.e., for land acquisition, building construction and operation as well as day-to-day management of the training program. He was also very instrumental in completing all the paper work required by the prefecture related to the application and authorization of an institute. As ARI continued to face financial difficulties after its establishment, Rev. Fukumoto assumed great responsibilities for a long time as the finance director of the board. The members of Nishinasuno church well understood and deeply supported such a commitment of their church pastor. And the spirit has long been carried on as a tradition of the church until today.

history

1983-1992

1983 FEB Indian graduates workshop was held, where the past participants evaluated the training program. From this year, workshops with similar purposes were held in various countries. APR Started receiving young people on the “One-year Volunteer Service” program sponsored by Japan Youth Volunteers Association (JYVA). AUG Teruo Miura (the first class of ARI, 1973) was newly assigned on the staff. Summer program in practical organic farming training started at the Murakami farm (managed by Shuhei Murakami) in Fukushima Pref. SEPT The dining hall building was burned to the ground (causes unidentified). What had been the dining room for the work campers was used instead. On the 15th, the 10th anniversary ceremony was held. A large number of guests from overseas including two graduates attended the function. OCT “Harvest,” the record of the graduates’ activities back home was published. Participated in “Seminar for mutual understanding among Asian churches,” hosted by the Tomisaka Christian Center. Participation continued until 1994.



1984 FEB The first “Study tour to visit graduates” was conducted, and the second one in November, in Thailand. [Since 1987, African countries were also visited. With the help of local graduate associations, the tour has been conducted almost every year up to this date. The 2012 tour was the 29th.] APR The dedication ceremony was held for the newly-completed dining hall building, named “Koinonia House”.

1985 APR Started accepting scholarship students of the Ministry of Education of the Japanese Government for 2-year training. The first two trainees were from Thailand. (It continued until 1988). JUNE G. DeVries received the Antoinette Brown Award from the United Church of Christ in USA. JULY Fellowship with the Obihiro City Agricultural Youth began in response to the ‘International Youth Year’ of the United Nations. (The program continued until 1994).

AUG Training at the organic farm, “Wind Family” (managed by Tadashi Ueda), in Tochigi Pref. began. SEPT The Pacific Ecumenical Missionary Conference took place on ARI's campus. OCT Visited Tanaka Shozo University (presided by Tatsuo Sakahara), addressing the issue of copper mine pollution. (It continues up to this date.)



1986 JAN Participants were invited by Tozawa Village, Yamagata Pref., and fellowship with the village community continues to this date. JUNE Held the International Agricultural Youth Symposium, cosponsored with Utsunomiya YMCA. SEPT The 4-year effort of “ARI Ecosystem (or, environmental conservation system)” was presented in “Ajia no Tsuchi” . The dedication ceremony was

held for the new women's dormitory (to accommodate 26 residents). Participated in the telephone consultation support activity for foreign residents living in Tochigi Prefecture, Tochigi International Life Line (TILL), in cooperation with the Woman's Christian Temperance Union (WCTU) of Japan/HELP. ARISA Tokyo Branch opening ceremony together with the 10th anniversary meeting. **NOV** Visited Masanobu Fukuoka, a natural farming practitioner, in Ehime Pref. for the first time during the Western Japan Study Tour. **DEC** Started a forestry project in Bato Town, Tochigi Pref.



1987 FEB The Urban Rural Mission Committee of the National Christian Council in Japan (NCCJ-URM) held a seminar on ARI's campus. **APR** Scholarships for 8 participants from 7 countries were granted by the Rotary Yoneyama Memorial Foundation. (From 1987 until 2013 fiscal year, 212 men and women from 29 countries have received scholarships from the foundation.) Accepted volunteers from Bangladesh and Thailand through "One-year Volunteer Service" program of the Japan Youth Volunteers Association (JYVA). **JULY** Held an open study session at ARI on natural farming with Masanobu Fukuoka, cosponsored by a group called "Sowing Seeds In the Desert". **OCT** The Japanese NGO, Center for International Cooperation (JANIC), was established, and Toshihiro Takami took office as the Chief Director. **NOV** Kyozo Yuasa, the Chairperson of ARISA, was awarded by the Japan Christian Culture Association.



1988 MARCH T. Takami was awarded with Shimotsuke Prefectural Citizen Prize. **APR** The Asian Rural Welfare Association (ARWA - Managing Director: Yoshio Tamura) was established. This first year, 4 participants received the ARWA scholarships. From this time until 2013, the association has supported a total of 102 participants from 10 countries. **JULY** ARI received the Foreign Minister's Commendation for its effort in promoting international exchange.

1989 JULY With the attendance of ARI participants at the International Farmers Conference, held in Yamagata Pref., as a start, the fellowship with the Okitama farmers began. **SEPT** Student Christian Fellowship (SCF) built "Nasu Seminar House" on property adjoining the ARI campus. Held an open seminar, "Living with the local community, and learning from it - Water in crisis" with Jun Ui as the lecturer, the author of "The Principles of Pollution".





1990 MARCH Director T. Takami, resigned. Gretchen DeVries succeeded the position (from the following month of April). "Charcoal making project" began with the cooperation of JANIC. **JUNE** Immigration processes for the overseas participants became difficult with the revision of some parts of the Immigration Control and Refugee Recognition Act.

1991 APR With the completion of the charcoal kiln (Yasu kiln), the charcoal making project began in earnest. The product was utilized as fuel as well as a soil improvement material. **JUNE** G. DeVries terminated her UCBWM missionary assignment, and continued her work at ARI as a volunteer.

1992 MARCH Director G. DeVries resigned, and Hajime Kikuchi succeeded the position (to take office in April). **APR** Extended the time for regular chores to approximately 3 hours, attended by all the participants and the staff members in the mornings and evenings. Those chores, including field work, livestock rearing and school building cleaning, have always been practiced as an integral part of the training and the community building activity from the beginning of the establishment of ARI. **SEPT** JANIC held an international conference on human development for NGOs at ARI. **NOV** Visited for the first time such organizations as the Kumamoto Association of People Considering Life and Soil, Kikuchi Health Care Institute, Minamata Disease Historical Investigation Museum, Minamata Disease Municipal Museum, Anti-Pesticide Minamata District Producers Alliance. (Still visiting many of those organizations today during the Western Japan Study tour.)

Tasting ethnic meals at the Harvest Thanksgiving Celebration (1990)



Mr. Shuhei Murakami

1923~2006

In the 1960s, numerous Korean Christians deepened their fellowship with Japanese non-church movement Christians. Shuhei Murakami used to participate in the Bible study meetings hosted by Ainou Association, an organization founded on a non-church movement tradition. At one of those meetings one year, he came across Rev. Um Tae-sung, a Korean pastor, who happened to be there from The Theological Seminary for Rural Mission (cf. separate column). Ever since then, which was indeed even before The Asian Rural Institute was established, the relationship of these two persons continued throughout their lifetime.

Mr. Murakami is a well-known *egoma* grower in Japan. *Egoma*, [or *Perilla frutescens*] is a shiso herb variety specially suited for oil production. In fact, he got the idea of growing it through his exchange with Rev. Um. Here we find the roots of *egoma* growing at ARI.

Although Mr. Murakami was an active person who immediately carried out what he thought was good, it was not easy at all for him to grow safe food with organic farming methods. In fact, during the period of high economic growth in Japan after the war, Mr. and Mrs. Murakami employed modern farming methods utilizing pesticides, chemical fertilizers and the like to grow rice, just as other ordinary farmers did at the time. He was also engaged in intensive poultry raising. As a result, however, both of them ruined their health. Due to this unfortunate experience, they shifted to organic farming at quite an early stage, apparently taking to heart the advice of the Ainou people, who were pioneers in this field as well.



Since the beginning of ARI, the Murakami farm has kindly received ARI participants for their study tours and on-the-job type of farming practices. Through such a long time association with the Murakami's and thanks to their great instructions, organic farming at ARI has also adopted various stimulations. For example "bokashi" has become one of the common words at ARI farm. It is a fermented fertilizer utilizing chicken manure, rice bran and other materials, and this technique was acquired from the Murakami farm.

Whenever visited by ARI participants, Mr. Murakami told them energetically about the theory of organic farming and its practice, which were borne out from his rich experience, along with the safety and especially the natural taste of organically grown vegetables. Also, he never forgot to talk about God's creation and his faith. The same was true with his special lectures frequently conducted on ARI's campus, leaving deep impressions every time on the hearts and minds of participants. Some of them had this to comment: "Is a Japanese organic farmer a philosopher?"



history

1993-2002

1993 **APR** As ARI turned 20 years old, the farm started implementing energy self-sufficiency, efficient water utilization and on-campus forest preservation projects through the use of appropriate technologies. Also, a fish breeding project began. **OCT** Held the 20th anniversary ceremony. The commemorative history documentat “That We May Live Together” and the graduates’ activity documentation “Harvest II” (English only) were published. In addition, a panel discussion was held in Tokyo to celebrate the anniversary.

1994 **MARCH** T. Takami resigned from the post of Board Chair as well as acting director. **APR** Masaaki Nakajima took office as the new Board Chair. Kiyoshi Nagashima served as the acting director. **JUNE** Jintaro Ueda took office as Director. T. Takami received the Yoshikawa Eiji Prize. **AUG** Started “Farm and Rural Community Study Tour” around Fukushima and Yamagata Prefectures, replacing the Northern Japan Study Tour.

1995 **FEB** ARI planned a “Sustainable Agriculture Seminar,” conducted in Chiang Mai, Thailand. Twenty-five people attended, including graduates from Thailand, the Philippines, India and Malaysia. The second seminar under the same theme was also held in Chiang Mai that December. **MAY** A seminar on environmental issues such as living creatures, water and the forest was held on ARI’s campus . Through December of this year, a series of 6 seminars was held. **DEC** St. Augustine’s Abbey, to which several graduates from the Philippines belong, established Santa Rita Training Center in Negros Island with the cooperation of ARI. From the following year 1996, the center served as a base of the ‘Negros Training Project,’ which offered field training to those who wished to attend from among those who graduated ARI the previous December, as well as programs for high school work-campers beginning 1997.



1996 **JUNE** T. Takami published “Tsuchi to Tomo ni Ikiru” (literally, “To Live with Soil”) from the Publications Dept. of the UCCJ. **AUG** T. Takami was awarded the Ramon Magsaysay Award for Peace and International Understanding. **OCT** Masaaki Nakajima, the Board Chair, passed away. **NOV** A special lecture was held by Han Kyu Cho, “The Theory and Practice of Korean National Farming”. **DEC** The first Negros Training at the Santa Rita Training Center was conducted. Eighteen ARI graduates of the year 1996 participated.

1997 **APR** The postgraduate course (Graduate Intern: GI) for Japanese started . One 1996 graduate was qualified. Some improvements were made to the curriculum formation in the following



areas: [Lectures] Spring term: “Sustainable agriculture”, “Instruction on survey methods and report writing,” Summer term: “Rural community research,” Fall term: “Rural development and community organizing,” “Small-scale rural development projects.” In addition to the above, lectures on “Development issues” and “Rural leadership theory” were offered throughout the year. [Farming technique training] In place of the farming rotation system, participants were divided into groups of “Crops and vegetables”, “Livestock”, and “Environment/ appropriate technology” and continued to work in groups for a longer term. **JULY** Yasuo Furuya (International Christian Univ. Church pastor) took office as the new Board Chair. **AUG** The first Negros Work Camp for high school students started. Twenty h.s. students and 1 teacher participated. Seven such work camps were conducted from then until 2005.

1998 APR ARI received a special prize for social contribution from the Tochigi Association of Corporate Executives. T. Takami became the Honorary Director. **NOV** An “Environmental conservation and appropriate technology” project team completed the grey water management system. The processed water was utilized in the fish ponds. **DEC** The first basic seminar for NGO workers “Environment and community development” was conducted, cosponsored by the Japan Association for International Collaboration of Agriculture and Forestry (JAICAF). The program continued until the 9th Seminar in 2008.

1999 FEB ARISA conducted a special program “Rural life experience tour in the Philippines”. **JULY** To the second basic seminar for NGO workers Masanobu Fukuoka was invited as a lecturer. **DEC** Prince and Princess Hitachi visited ARI.



2000 MAY G. DeVries finished her work at ARI and returned to the US. **JUNE** The 100th issue of “Ajia no Tsuchi” was published. Haruo Fukumoto, a former member of the board of directors passed away. **NOV** A millennium gathering “Peace Conference” for graduates from South Asia was held in Kerala State, India (funded by the Niwano Peace Foundation).

2001 MARCH J. Ueda resigned from the post as Director, and was succeeded by Yasuo Furuya. Also, Teruo Miura was assigned as acting director (both taking office in April). **SEPT** ARI received the Mainichi Newspaper International Exchange Award. **NOV** ARI’s community development work in Negros Island, the Philippines was chosen as “Project of the year” at the International Cooperation Festival in Tokyo.

2002 MARCH Y. Furuya retired from the post as Director. Koa Tasaka, a former ICU Professor, took office as the new Director (from April). **APR** ARI Metropolitan Office opened (Fujisawa City, Kanagawa Pref.). **NOV** Completed construction of a food processing building, “Manna House,” as one of the 30th anniversary projects. (Funded by the UMC in the US).



In remembrance, companions of ARI
共に歩んでくださった人々



Missionary Gretchen DeVries

1923~2005

Gretchen DeVries, a missionary from The United Church Board for World Missions, served as a secretary to Toshihiro Takami, director of The South-East Asian Christian Rural Leaders' Training Course (SEAC), while at the same time teaching at The Theological Seminary for Rural Mission from 1970. When The Asian Rural Institute started in 1973, she continued to serve as a secretary to the director and contributed greatly to the work of communicating with overseas supporting churches and sending organizations of participants, and of building a network of ARI graduates. Utilizing her past work experience as a secretary in a private company prior to coming to Japan, she worked from the early morning until late at night using an electric typewriter, and many staff members and participants remember well the machinegun-like rattling from her office.

One year in the 80s, a certain German church-related organization decided to give ARI a grant covering training costs for 10 participants. Ms. DeVries earned the trust of this organization through the very thorough and informative financial and training reports that she submitted to them upon the completion of that year's training course. From that point on, the organization continued its support with an increasing amount of grant year by year. Ten years later, they pledged to grant travel costs and tuition for 25 participants.

Director Takami made frequent business trips abroad to report about ARI activities and show appreciation for the generous support rendered by overseas churches and organizations, as well as to solicit further support. All those activities of his were conducted smoothly because of DeVries' behind-the-scenes work.



Though very busy, she made efforts to spend a great amount of time with participants, especially with women participants. She was a 'mother' to them, and also their consultant. Despite her persistence, she could not readily improve her Japanese language skills, but this may be one reason why she was able to communicate heart to heart with overseas participants, who must have found themselves in the same circumstances.

Succeeding T. Takami, she served as the director for 2 years from April of 1990.

One of her favorite things, while living a very simple life and working all day long for ARI and the participants, was to reunite with the graduates in their actual assignment sites by joining ARI-sponsored 'study tours to visit graduates' many times. Every time she did, she tried to evaluate contents of previous years' training programs, identify new challenges, and share the findings with other staff members upon coming back 'home' .



In remembrance, companions of ARI
共に歩んでくださった人々

Rev. Um Tae-sung

1932~2012



Rev. Um Tae-sung, a pastor of the Korean Methodist Church, participated in The South-east Asia Course (SEAC) in the Theological Seminary for Rural Mission. His learning and experience through the course are thought to have had a great influence on his life. Completing the course in 1966, he returned home and devoted his life to form rural churches and to facilitate local community development. Often times he went beyond the self-imposed limits of what is expected of a "pastor", conducting various projects aimed at enhancing the self-reliance of the community. Introducing and promoting a credit union was one of them. His projects were all financially independent. Such efforts of his deserve due credit in view of the mindset of the people at large in developing countries, even to this date, in that 'leaders' are the ones who can skillfully and successfully draw funds from donor agencies. The practices of Rev. Um were pioneering work of an innovative model.

One of the many projects Rev. Um initiated, and the one that lasted longest, was with Tozawa Village in Yamagata Prefecture. It was not like any other project conducted by Korean churches in that it did not wave an evangelical flag. Instead, it simply tried to involve the community as a whole, aiming at contributing to the growth and development of the people of different ages. The exchange program with Tozawa Village still continues to this day. There have been more than one hundred visits from Tozawa Village to Korea during these past two decades or so.

A building called 'Korai-kan' (literally, Korean Pavilion), erected on a hill facing Tsuruoka-Kaido Road at The Mogami River bank, is the symbol of the history of their exchange. In June 2012, a group of people from Tozawa Village International Exchange Association visited Songhak Village (presently, a part of Jecheon City) where Rev. Um's activities were based. The director of the Association, the Tozawa Village Head, Director of the Tourism Association and others were among those who participated in the trip.

In just a half year after their visit in November 2012, Rev. Um passed away. In his lifetime, he served as one of the trustees of ARI in the 1990s.

(Rev. Ban Hyung-wook and Mrs. Jeong Jeon-hae, a married couple who are members of Rev. Um's church, Songhak Church, were trained at ARI in 1983 through the recommendation of Rev. Um. After graduation, they worked in several rural churches following the will of their mentor. They came back to Japan as missionaries of the The Korean Methodist Church in 2004 with their rich career greatly appreciated. Ever since then, they have been working at ARI, sharing their practical wisdom with the next generation of rural leaders.)

history



2003-2012

2003 APR The new logo mark of ARI was designed and offered by the Interblend Foundation. **OCT** The 30th anniversary symposium, “Freedom from Hunger – The Challenges and Prospects of Organic Agriculture” was conducted .

2004 MARCH The basic concept of the training program was reviewed, and the following reforms were made which placed an importance on “endogenous development” as a base theme. (A) Provision of full consultation (B) Introduction of teaching methods to facilitate participant-led discussions (C) Strengthening various participatory methods (D) Improvement of evaluation techniques, and (E) Provision of support for participants in completing graduation thesis by reevaluating oneself and one's community positively and setting a new goals for the future. **JUNE** Installed a rain water catchment tank and a ram pump, which pumps up water without motor power, in the woods on the south side of the women's dormitory, with instruction and cooperation given by the AID Foundation in the Philippines. **JULY** Conducted “A grassroots pilot project of sustainable integrated farming and environmental conservation” with funding from JICA Grassroots Technical Cooperation Projects in Allahabad, India (until June 2007). Teruo Miura, a former staff member managed the project at the site.



2005 JAN From this year onwards, only Japanese participants attended the Negros training. **FEB** G. DeVries passed away in her home town in the State of Nebraska. **JUNE** ARI began accepting Japan Overseas Cooperation Volunteers (JOCV) for their technical supplemental training. (It continues to this date, conducting several sessions a year with a period of approximately 3 weeks each.) **JULY** ARI began accepting short-term trainees on the program for local government workers from various countries invited by Japan International Cooperation Agency (JICA).



2006 MARCH Director K. Tasaka resigned, and was succeeded by Isao Nozaki (taking office in April). **SEPT** The Emperor and the Empress visited ARI. **OCT** ARI received the Asia Pacific “Culture Prize” of the Asia Pacific Forum Iue Memorial.





2007 JAN A ceremony was held to commemorate the 10th anniversary of the Santa Rita Training Center in Negros Island, the Philippines. Twelve people attended from Japan, including the Japanese graduates of 2006 and general citizens, who joined a study tour conducted afterwards. **SEPT** The Peace Symposium “Peace from Soil” was conducted on ARI’s campus as the “International Exchange Program Between Japan and Other UNESCO Member States” of the Asia-Pacific Cultural Center for UNESCO. **OCT** Reprinted “Tsuchi to Tomo ni Ikiru” by T. Takami as a part of the 35th anniversary projects.

2008 APR Received the 14th Distinguished Services Prize from the Japan Ecumenical Association. **JUNE** Inaugurated the founders’ meeting in Tokyo for “The 40th Anniversary Fund Raising Campaign”.

2009 FEB Received the Asahi Social Welfare Prize for the year 2008. **MARCH** Director I. Nozaki resigned, and was succeeded by Kenichi Otsu (taking office in April). **NOV** Conducted the Peace Symposium “Peace from Soil II.” Held a charity concert at Meiji Gakuin Shirokane Chapel in Tokyo, sponsored by ARISA.

2010 MARCH Reviewed the basic concept of the training and revised it into the following 10 items. 1) The philosophy of “That We May Live Together” 2) Servant leadership 3) Foodlife 4) The idea of living together with nature 5) Localization 6) Community-based learning 7) Skills to live with others 8) The dignity of labor 9) Spiritual growth 10) Learning attitude **SEPT** ARISA sponsored “Peace Concert/ Peace Art Poster Exhibition” at the Kuroiso Cultural Center, attended by 650 people.

2011 [Graduates reunions were held at various places on occasions such as the “Study tour to visit graduates.” This year saw a particular development with gatherings in Sri Lanka (January), the Philippines and Nepal (February), and in the States of Manipur and Nagaland of Northeast India (March). Staff members were dispatched to each meeting except the one in Nepal.]

MARCH In the afternoon on the 11th, the Great East Japan Earthquake hit most of the northern half of the main island, affecting also the ARI campus, located on a gentle mound in the suburb of Nasushiobara City. The area registered magnitude 6- on the Japanese seismic scale. Greatly damaged were the main building, Koinonia House, the women’s and men’s dormitories and many others. Electricity and water supply lines were cut off. As for the staff members and volunteers, 30 people were on regular duties on campus that day. Thankfully, all participants had already returned to their home countries in December after the graduation ceremony and were therefore not on campus at this time. On the 12th, a temporary administration office was set up in the adjacent Nasu Seminar House and all staff members resumed their work. On the 14th, iodine and cesium contamination was observed in various spots on campus, caused by the hydrogen explosion at the Fukushima Daiichi Nuclear Power Plant. On the 18th, an extra issue of “Asia no Tsuchi” was mailed out nationwide, reporting on the damage situation and appealing for donations aiming at 5 million yen for urgent restoration activities. On the 31st, an official letter was sent to the standing board committee of the Theological Seminary for Rural Mission located in the suburb of Tokyo, requesting that ARI be able to





temporarily use the seminary facilities for the 2011 training program for the period of no more than 3 months. One week after that, on the 6th of April, the seminary replied that they would be ready and willing to fully cooperate by all means possible. **MAY** On the 2nd, a new term of the training started at the seminary. It continued there until the end of July. During this period, the staff members and others were divided into two: one group in charge of the training at the seminary and the other in charge of administration businesses on ARI campus. On the 14th, the dedication ceremony was held of the Farm Shop building together with the 39th Opening Ceremonies, welcoming 20 partici-

pants and 1 training assistant. **AUG** The board of directors decided to halt “The 40th Anniversary Fund Raising Campaign” which was started 3 years ago, and to newly start the “Disaster Revival and Reconstruction Campaign” from the upcoming December, aiming at 530 million yen. **NOV** The Commencement Service was held about 2 weeks earlier than in normal years.

2012 **JAN** NCC Japan Ecumenical Disaster Response Office (JEDRO), which was entrusted with disaster response

funds from around the world, donated a radioactivity measuring device. With it, the “ARI Becquerel Center” was established at Nasu Seminar House and started a food radioactivity measurement service for the public. Members of Nasunogahara Residents' Association for Radiation Protection (NRARP) gave its full cooperation for the operation and management. **APR** The 40th Opening Ceremony was held at the Nasu Seminar House. A total of 30 people joined, i.e., 27 participants from 16 countries, 1 graduate intern and 2 training assistants.



JUNE At the ARISA general meeting, the proposal for organizational reform was accepted, including the change in Japanese naming (English naming and its abbreviation unchanged). The Board Chair Akira Niwa suddenly passed away. Kenichi Otsu, the Director, took on additional duties as the new Board Chair. **SEPT** Dedication ceremony was held for the “New Koinonia House and classroom building – in remembrance of the late Akira Niwa.” **DEC** The 40th Commencement Service was held in the new Koinonia House.



2013 [From right after the news of the Great Earthquake until September of 2013, various churches, organizations and individuals both in Japan and overseas have given great help and support to ARI for the post-disaster reconstruction activities.]

APR The 41st Opening Ceremony was held with 32 participants, including one training assistant. **JULY** Dedication ceremony was conducted for the new men’ s dormitory (2 separate buildings to accommodate 43 residents) and a new pigpen. **SEPT** On the 16th, the 40th anniversary ceremony and symposium was conducted. The theme: “Transformation at the Grassroots – Forty Years of Walking with Rural Leaders.” Guests along with many generations of graduates attended the ceremony.



In remembrance, companions of ARI

共に歩んでくださった人々



Dr. Akira Niwa

1935~2012

Dr. Akira Niwa happened to come across the existence of ARI for the first time while he was a professor at Dokkyo Medical University, located in the central region of Tochigi Prefecture. It was there that the then director T. Takami contacted him for help in regards to an endemic disease that an African participant was found suffering from after arriving in Japan. Decades later, in 2006, Dr. Niwa became the Board Chair of ARI and served two consecutive terms, or for 6 years.

In the middle of the 1990s, he established a social welfare organization named ‘Hitomugi-fukushi kai’ (literally, “One-grain-of-wheat Welfare Institution”), and assumed its Board Chairmanship as well. In neither of those duties did he ever compromise his work. As the ARI Board Chair, he did his best, especially in reconstructing its financial conditions. So proficient in finance management himself, he even prepared financial statements for the board meetings every time. In addition, he proposed income-generating activities through self-help efforts and set up an Income Generation Section within ARI to promote the sales of processed foods utilizing farm produce harvested from the fields on campus. Furthermore, he made efforts to talk to his friends about the work and mission of ARI whenever possible, which later resulted in winning new supporters. .

Niwa was an MD and a professor emeritus of Dokkyo Medical University. His own grandfather, Mr. Kosuke Tomeoka, was one of the well-known pioneers in social welfare in Japan. Regardless of the social status of himself and his family, he was an openhearted person, who got along easily with people of many different walks of life. Although when excited, he sometimes would talk in one go, in general he spoke in a calm manner. “The work of ARI,” he often emphasized, “rests on the war responsibility of Japan during WWII.”

After the March 11 Earthquake of 2011, by which many buildings on the campus were severely damaged, there seemed not a single day that he was not seen on campus. Driving well over two hours one way from his home to come to the damaged site, he literally devoted all of his available time to be with the staff members to lead the post-disaster reconstruction activities. Just as he was beginning to consider continuing on to his third term so as to fulfill the Board Chair’s responsibility until the last stage of recovery from the disaster, on the 25th of June, 2012, he suddenly passed away. He was only 76.

The ARI Graduates

(1241 persons)

* indicates deceased persons



Graduates of the South East Asia Course

(116 persons)

The Asian Rural Institute counts the 116 graduates of the South East Asia Course (1960 - 1972) as its own graduates. The list below includes the 9 short-term trainees from that period.

1960 **Korea** Oh Seh-chul / Cho Young-hie **Japan** Michiko Tonegawa **Taiwan** Ming-Fang Hsu / Chin-Fong Hoang / Cheng-Yi Yu / Shy-Ming Huang

1961 **Korea** Kei Chang-bong* / Ahn Hee-kuk **Papua New Guinea** Dick Bernardus Rumbino* **Philippines** Camilo T. Toledo* / Baltazar H. Rosales* / Narciso Quimba Ibarra* **Taiwan** Hsin-En Chao / Chen-Ken Chang / Hsin-Chi Lin **Thailand** Charoen Suttasarn*

1962 **Myanmar** Saw Eddie Loo **Philippines** Artemio T. Auste* **Malaysia** Ling-Kwong Lee **Taiwan** Jong-Siong Chuo / Kwei-Song Chung **Thailand** Somboon Daengruan*

1963 **Indonesia** Hadarian A. Pasaribu **Korea** Moon Yong-oh / Lee Dou-syub **Philippines** Cesario T. Alegado / Leodegario A. Millambling **Taiwan** Chiou-Tsai Hwang / Maw-Hsing Say **Thailand** Ampai Glinhawn* / Boonsri Glinhawn

1964 **India** Easow Mar (V. T. Koshy)* **Korea** Park Keun-won / Lee Chang-bok / Kim Mal-joon **Philippines** Jose G. Mejica* / Ramona D. Loyola* / Jose L. Ibalarrosa* **Thailand** Charul Uprakham* / Mien Pongnoi*

1965 **India** Budh Singh* / Christ M. S. Kandulna **Korea** Lee Jong-sung **Malaysia** Joshua Bunsu **Philippines** Alejandro H. Dugaduga* / Pedro Trinidad **Samoa** Risatisona Ete / Fereni Ete **Taiwan** Yu-Tian Lin / Jih-Hsin Hsu **Thailand** Somboon Bromwongkwa* / Nira Kamhangsong* / Boonsong Arknaiyar* / Subhan Doungnate

1966 **India** Narsingh Nagu **Korea** Choi Woo-keun / Um Tai-sung* / Kim Jong-ill **Philippines** A. Juan B. Sicwaten* / Leon Lorico* **Taiwan** Wen Jyh Shyu / Hok-Leong Chhia **Thailand** Prakob Suwannagul* / Jumnian Suwannagul

1967 **China (Hong Kong)** Philip (Kuri Shin) Sun **India** Haman Lakra* **Philippines** Ofelia Bartolome / Nathaniel Espantar **Taiwan** Yuh-Po Hwang **Malaysia** Busitt Duangkaomai

1968 **Bangladesh (then East Pakistan)** Paul Munshi **F.S. Micronesia** Madhilde Epel* / Linter Epel **Korea** Park Jong-soo **Thailand** Tanorm Srisuwan* / Samran Koangwaen / Wilai Tipakorn

1969 **India** Jacket B. Emmanuel / Emmanuel S. Marandi / George E. Ratnam **Indonesia** Melkias B. Liufeto **Korea** Cho Wan-kul **Thailand** Pipat Chai-surin* / Tanorm Weerapanta* / Prapan Sae Ho Hoprayun

1970 **India** Abiya Pasad Tandi* / Bomraspet Manikyaa Rao / Reuben Senapati / Tukeram S. Kamble **Korea** Nam Won-Sik / Choi Byong-Chil **Malaysia** Peter K. Gani **Philippines** Urbano Lamoste* / Jorge E. Rubio **Taiwan** Ling-Yueh Pan

1971 **India** Niranjana Ekka / Benjamin Asai* / R. Moses Premanandam / Sushil Kumar Baria **Japan** Kiyoshi Nagashima **Korea** Kim Dai-sik / Yoon Jung-man **Malaysia** Chon Kong Kang / Kuan Leong Loh **Philippines** David O. Ubay / Maximo B. Dizon **Thailand** Sila Wangchai* / Taratorn Sirimontaporn

1972 **India** Simon Gnanasundaramani* / David B. Singh / Robert M. Singh **Japan** Koji Sasaki* **Korea** Cho Moon-ki* / Kim Eun-kyu **Malaysia** Hee Sing Chong / Lai Ching Kwan **Nepal** Renuka Bala Neupane* / Laxmi Prasad Neupane **Sri Lanka** T. Kirupanandarajah **Thailand** Songdej Kusawadee* / Kajorn Chawyong / Paitoon Seedangchun / Klaus Prinz **Vietnam** Trong Quy Truong

1960-1972

Asian Rural Institute

Graduates of the Rural Leaders Training Course (1049 persons)

The list of graduates below (1973-2012) covers only those who successfully completed the full curriculum of the Asian Rural Leaders Training Institute, as authorized by the Governor of Tochigi Prefecture, and who were accordingly awarded a certificate. Short-term participants are not included.

1973-2012 graduates

1973 **Bangladesh** Augustine Talukdar / Ruben Toppo / Jerome Sardar **India** Kaleshwar Kachhap **Japan** Teruo Miura / Ko Ooka **Korea** Lee Bock-hee / Lee Hyung-kon* **Malaysia** Thomas Thong / Stanley G. Muling / William Mapan **Thailand** Chana Karawanon*

1974 **Cambodia** In Yuthea **Laos** Kengchanh Phongsavang **India** Pichai Satyasurya / Esther Singh / Michael J. Marandi / Subhash J. Barik / Kollory Manuel **Indonesia** Manja Kondamesa* / Jacob J. Tuhumury **Korea** You Calm-young

1975 **Bangladesh** Sunil Kumar Talkder* / Bivash Singha **India** Konathu Joseph John* / Sona Wakoba Gaikwad* / Ignacio Almeida **Malaysia** Margarete Anto / Bah Chongweh / Bah Helah **Philippines** Angelina Bisuna **Thailand** Chandee Chairatana* / Suchitra Buntusarnee

1976 **Ghana** John E. Acekifi* **Bangladesh** Daniel T. Baroi* / David D. Dewri / Mildred Sardar Anwar / Earnest Amrita Lal Roy* / Latika Baroi **Fiji** Mikili Livani **India** Simeon C. Vaz / Virginia P. Solanki / Ardhendu S. Chatterjee / Ambuja E. Kasim / Mary Pershad **Japan** Tadimitsu Katsurahara **Malaysia** Fabian Saging / Chong Chong Bing **Nigeria** Sidney Osuji **Sri Lanka** Bahula Perera Weerawardana* / Dorothy Peiris **Thailand** Joseph R. Tangsurakit / Jinda Laklam / Amporn Danpongping

1977 **Bangladesh** Amita Baroi / Sunil K. Halder / Paul Biswas **India** Vemmelil K. Rachelamma / Russell Thompson Wells / Gnanasigamani W. Devanbu / Thomas Varghese / Mehar Singh* / Salomi S. Singh **Korea** Lee In-shir **Pakistan** Sammel Naseem* / Dorothy Harrion* / Ishaq M. Gill **Philippines** A. Lucila Mar Toriaga / Jonathan Cathedral / Visitacion Precioso / Joan Abonero **Sri Lanka** Palitha Welikala / D. A. Ariyadasa / S. G. De Alwis / N. J. Perera / Lakshman Perera / Indrani Perera Wijesinghe **Thailand** Wichian Charoensap

1978 **Bangladesh** Bikash Adhikary / Sujit K. Baroi / Helen Howlader / David Sarker **Liberia** Roye Dixon Carter* / Morris Fofana **Ghana** Nathaniel Dodd **India** Madhuri Mukuhty / Alexander Mathew / Yeshawant Kamble / Sunchu Devadass / Dhormojoya Asha / Mukul Rai / P. Mariamma Thomas **Indonesia** Adipid-ekso Boas / Selamat Barus **Japan** Masaki Yano / Osamu Murata **Korea** Ok Yong-yoon / Lee Joon-hee **Nepal** Prabhu Dan Gurung **Pakistan** Reuben Haq / Naheed Suleman **Philippines** Roberto Abao / Luzaminda Padlo* / Adelaida B. Baesa / Julia Defeo **Sri Lanka** Malini C. Godagama* / S. Alfred Cherubim / Lakprabha Panditharatne **Thailand** Suradej Chaiwongkeo / Srisuk Daranond / Rawiwan Songsaeng / Sukhum Srisang **India** Prabhat Failbus

1979 **Bangladesh** Aruna Adhikari / Noel T. Adhikary / Symon P. Adhikary / James Ruran **Ghana** Comfort Love Owusu-Kena **India** Vitoi K. Sema / Kunnel J. Jacob / K. V. Sosamma Thomas / K. V. Thomas / U. S. Samuel / Peter O. Isaac / Jayashree Biswas **Indonesia** Supandri C. Paulus / Jasahliaman Damanik / Timbul E. Raja-goekgoek* **Japan** Masaki Sato **Liberia** Esther M. Innis / Blanche H. Richards **Malaysia** Wilson Sigai **Philippines** Carolina L. Salido / Beulah P. Bautista **Sri Lanka** Samuel E. Stembo / Bernadine P. David / Leelawathie Withanage / Mahatun K. Jayasinghe / Kshanti T. Alles **Thailand** Saiphon Hinpang / Manun M. Nantawisut / Nuntawee Charoensap / Plernpit Narmwong

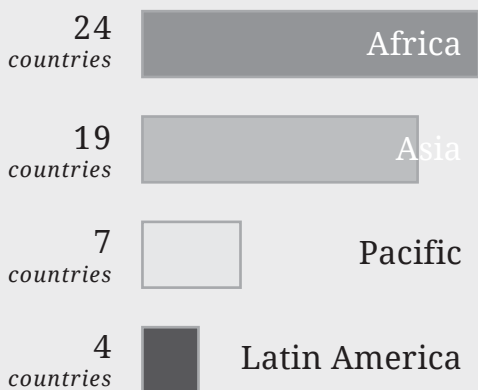
1980 **Bangladesh** Lucy A. Baroi / Anthony Palma / Monorama Mitra / Jessie A. Guha / Sree R. Sarkar **Ghana** Robert C. Erzuah **India** Hemlata Prakash / Sunirmal Karmakar* / Ruy Mascarenhas / V. S. Mayonsing / Ivan Clifford **Indonesia** Mochamad Syachrir M. Z. **Japan** Yoshihito Okamura **Korea** Choi Eun-hee / Min Joung-wong **Nigeria** Olusola Odunsi / Ebenezer Odunsi **Pakistan** Nazir Hasrat **Philippines** Luke B. Busaing / Maria Tacalan / Josabeth Marana **Sri Lanka** J. Seenithamby Ravindran / Wijendra De Silva **Thailand** Sritorn Kunna / Plearnpit Chaininphun / Wangnakon Chaimongkol

1981 **Bangladesh** Golam M. Chowdbury* **India** Harish Chotani / Annamma Abraham / D. P. Panmei / Marianus Ekka / Reni K. Jacob / Dorothy Sreenivasa Rao / M. P. Sreenivasa Rao / Teisovilhou Tungoe **Indonesia** Ganti Y. S. Meliala / Albert Foret **Korea** Kim Jung-he* / You Woo-youl **Liberia** Dixon K. Kamue **Malaysia** Esther Tatan **Philippines** Glorios Baluntong / Fernando Bagyan **Japan** Izumi Murakami **Sri Lanka** Puji T. Gunawardana / B. Clarence I. Mendis / Cyril Jayasinghe* / J. K. Walter Silva* / Chistina Samuel **Taiwan** Sheng-an Lin **Thailand** Prakt Kumduangdao / Vanda Chiemvisuit / Jerawan Chairatana

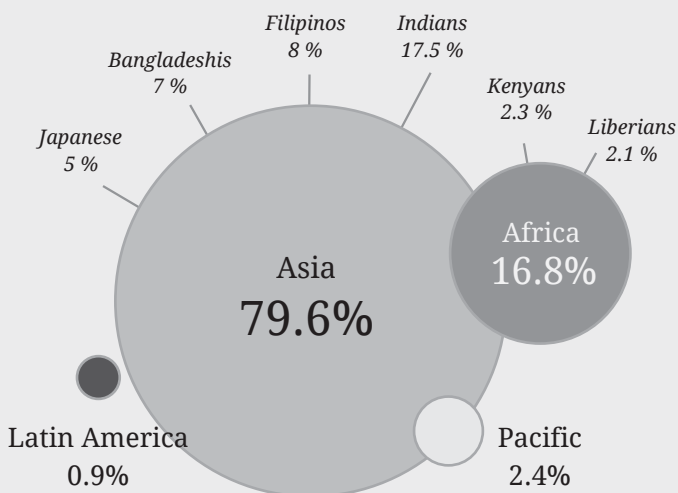
1982 **Bangladesh** Nirmol Richil / Nirendra Chisim / Sannuam Bawm **Sri Lanka** Theivendaram Vigneswaran **Ghana** Agnes A. Ansa **India** G. Sugirthan Thamby Raj / Daniel Chelladurai / Niechulo Kreo* / Vikiezonuo Kire / Chandra M. S. Bhatia **Indonesia** Amsal Sinuraya / Matus P. Barus **Japan** Yuzo Asami / Reiko Asami **Kenya** Jennifer Kanake / Misheck Kanake **Korea** Choi Jae-wha **Liberia** Peter Demawu **Myanmar** Saw Mar Gay Gyi **Palau** Kabidor Taima **Papua New Guinea** Mabilia Lepo / Mang Takiseng **Philippines** Wenceslao Molato / Felix Vergara / Ma. Josephine Maravillas / Juliana Domingo **Thailand** Kamol Harichaikul / Anuluck Pilarat **Tonga** Mele Kamitoni

Ratio of Graduates' countries and continents

The **1,049** Graduates of ARI's Rural Leaders Training Course are from **54** different countries



Most of them are Asians.



1983 **Bangladesh** Md. Naziullah / Paul Desai **India** I. S. M. Selvaraj / Sarah Mao / Vilarheingunuo Neinuo Kire / Eleanor Abraham / Peter Devanbu **Indonesia** Jason Ronsumbre / Sahat Sihombing / Eddy Susanto / Yohanis Tandung **Japan** Sumio Yamashita **Korea** Ban Hyung-wook / Chung Jeen-hae / Park Nam-sik **Liberia** Nimley Sieh **Philippines** Leopoldo Naive / Anee Y. Guloy / Nephthalie Bascoguin **Sri Lanka** Loyola Ponnavaia / Anselm Fernando / John P. Illesinghe* **Thailand** Tsong Sri In Keau* / Uma Chareonsap / Ruenchai Noy Pombejra / Sriporn Sadatoo **Nepal** Phaud Thapa **India** Mathew George **Zambia** John Nyondo

1984 **Bangladesh** Luke Gain / Feroza Chowdhury / Dipak K. Ghosh / Anil K. Roy / Sukla Sengupta **Ghana** Aizake Henry Armoo / David Ashiley **India** Purushottam B. Rathod / Vingoza Thapru / Ellen Konyak Phamna / Shanthi Kurien / Y. John Yesupadam / Thuankubui Pamei **Indonesia** Halle Powatu / Octavina Yeblo Lesomar / Fientje Jarangga **Trinidad & Tobago** Lucy Mahabir **Kenya** Augustine Omoto Chitayi **Korea** Park Joon-soon / Bae Ick-hwan / Choi Pu-ock **Malaysia** Hwee Noi Tan **Myanmar** Kareng Hting Nan / She Ka Wee **Nepal** Krishna Gurung **Thailand** Kanyanee Wilaikul **Philippines** Adeltrudis Lopez, O. S. A.* / Jane S. Sapaen / Ma. Claribelle Jugueta, O. S. A. / Christaine Faculo **Sierra Leone** Amadu Lamin Serry* **Sri Lanka** Tyrone A. G. Stephen* **Tanzania** Joseph Ngereza **Thailand** Sopa Tamachotipong

1985 **Bangladesh** Islam Khan Thariqul Pathan **India** P. Reddy Kosanam / A. Hongsha Maring / Techa M. Ronglo / Ahiam Panmei / Abraham Dharmakan **Indonesia** Firman P. Ginting **Kenya** Benson Kithingji Bujanga* **Korea** Yun Suk-yong / Kim Kwang-shik **Liberia** Winston Carter **Myanmar** L. Hkun Gam **Philippines** Elizabeth Grace P. Francisco / Luis Arueza **Solomon Islands** Aaron Bea / M. Korisa Bea **Swaziland** Ephriam Khumalo / Elmon Ndlela **Tanzania** Abdul M. Nchahaga / Mwatumai Mwanjota **Thailand** Aiem Sa-Ad Pirochchai / Chanhom Jaiyai / Arun Korkaew **F.S. Micronesia** Youber S. Jossien **Zambia** Nellah Ngoma Sinoya* / Cephas Sinoya*

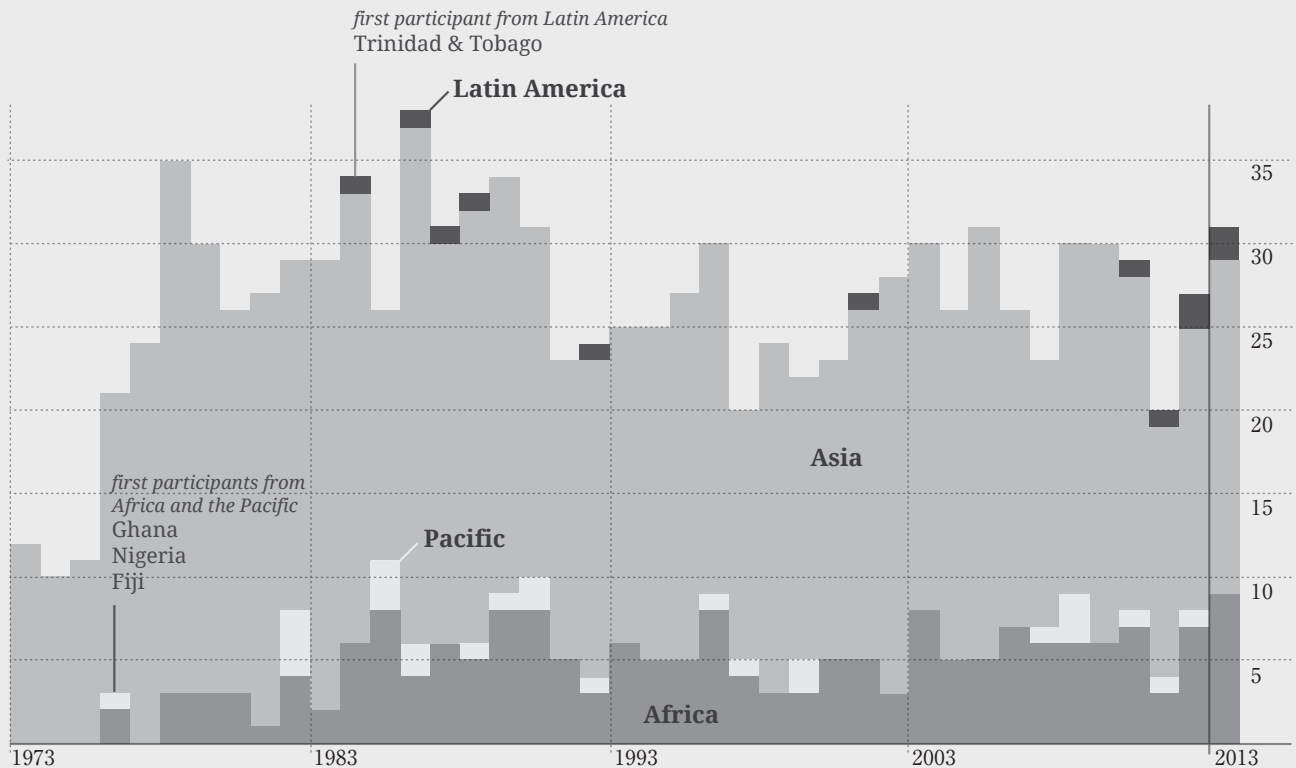
1986 **Bangladesh** Anwar Hussain / Prodip Baidya **El Salvador** Luis O. Pleites Moran **Fiji** Sairusi Vasake **India** Thangkhomang Haokip / Shwelo Thong / Joseph Rodrigues / John Mathew / M. Komuni Mao / Bikash Bori / T. Stephen George **Indonesia** Sasi Saniman **Japan** Takeshi Murakami / Hideki Yabuki **Kenya** John B. Mugecha Karume **Lesotho** Simon Moruti P. Ntleu **Malaysia** Asuthas Chinnapan **Myanmar** Saw Mac Donald* / Naw Paw Wah / Naw Greeta Din / Ding Rin Brang **Nepal** Ram K. Shrestha **Philippines** Maximo Clave Alvarez, Jr.* / Connie Illastron / Alicia Gibaga / Joel Alviar / Helen Reala / Nieves C. Ebing Apostol **Sierra Leone** Alie P. Tarawally **Sri Lanka** Leela

Liyanapedigedera* **Thailand** Paisarn Pilokham / Chatchai Rachasuwan / Napada Ambuprabha / Leam Wongphabood / Wichien Pongporn / Somyot Suparpornhemin **Tonga** Tupou T. Puleiku **Zambia** Getrude Chifita

1987 **Bangladesh** Md. Mottalebur Sarker / Md. Abdur Rahim / Nem Kim Bawm / Clara Biswas **India** Serenah Valui / Yohannan Chacko / Mashangam M. K. / Viswanadham Luther Pullagura / Vekriyi Venyo / Hupuabou Newmei **Indonesia** Markus D. Pabunga **Korea** Mun Sang-bum **Nigeria** Emmanuel Cannon Adeyelu **Philippines** Roberto Dalisay / Era E. Colmo / Reynald Ventura / Gigi Baldovino **El Salvador** Israel Espana Olmos **Sierra Leone** Amara Fofannah **Sri Lanka** T. Selvarajah Kulasekaran* / Sripathy Kandiah / K.A.N.D. Kodisinghe / P.A.J. Menike **Swaziland** Teresa Chiya **Tanzania** Elias Bugoke **Thailand** Cherdchai Chaiwong / Sawang Suriya / Narong Tongasuk / Preticia Kamei Tongasuk **Uganda** Godfrey Mutesasira **Zambia** Elizabeth Chishimba

1988 **Bangladesh** Meers Mankhin / Nasiruddin Ahmed **Burundi** Leonard Niyibizi **El Salvador** Samuel E. Fuentes Escobar* **India** Vio Martha Gracy / Ngonamei Sangsethuiliu Chawang / Mohinder Munder Singh / Thomas Mathew / Neisalie Losou / G. Sugantha Kumar / Selvaraj Novle Chandran / Palimutton Chacko / Ajanuo Belho **Indonesia** Frans Albert Mamesah **Kenya** Peter John Machira **Korea** Kim Tae-hyun **Liberia** Jack Seibeh **Nepal** Ganesh B. Gurung **Pakistan** Eliezer Mall **Papua New Guinea** Alicia Toroi **Philippines** Zosimo Buerano / Cristita Malon Pacatang / Leonila S. elardo O. S. A. / Virginia B. Cervantes O. S. A. / Jaime Ramoran **Sri Lanka** M. Padma Gamalath* / Srianthie M. Salgado / Asaiththampey Samithamby **Tanzania** Magdalena Leon Shiyyo **Thailand** Chomchuan Boonrahong / Suchada Kuanpinij / Rosana Tositrakul **Zambia** Judith E. Ngoma Chisenga

1989 **Bangladesh** Florence Biswas **Ethiopia** Solomon Nigatu / Berhane Michael **India** Bithi Sinharoy / Surender Singh / Awungshi Realson / Awadhesh Mishra / Magimai Kumutha / Sanotla Lamlang Khayaisang / Christopher Solomon Gundala / Joaquim Fernandes / Devairakkam David / Ketholezo Sorunuo / Agnes Vimala **Japan** Minoru Nakayama **Korea** Won Hye-dug / Kim Jun-kwon / Um Chin-hi **Nepal** Beena Gurung **Mozambique** Juliao Daglasse **Nigeria** Ayuba Kari Dauda **Papua New Guinea** Dick Gavun Kolai **Philippines** Encarnacion Lunario / Jose Carlos Laud Salazar* / Danilo L. Bustamante **Sierra Leone** Elizabeth F. Sesay **South Sudan (then Sudan)** Gabriel M. Adam **Sri Lanka** Somasundram Balachandran **Tanzania** William Munisi / Rose Gama **Thailand** Thanawalai Jaroenjandang* / Jirapan Panwang / Bamrung Kayotha / Arunee Weingsang



1990 **Bangladesh** Par Nem Kawmlau / Nilima Mazumder
Fiji Momoivalu Rayacarogo / Paula T. Valevou **Ghana**
Moses Mottey **India** Mariamma Mathew / Pascal Mary
Antony / Ganesh T.P. / Suresh Rajanayagom George / Buonhangmawi Inbuon /
Malliga Jeyapandy / Dinesh Murmu **Indonesia** Rusmin Purba **Kenya**
Peter Chandi / Jonathan Musango / Mzungu Raphael Ngoma / Rose Alenga
Korea Lee Jang-seop **Malaysia** John Salomon **Myanmar** Tuang Khan
Kap **Philippines** Batucan Veronica O. S. B. / Mario Fungo / Renato Miguel / Jose
Felino Resol **Sierra Leone** Albert Kamara **Sri Lanka** Wimal Dissanayake
/ Radakrishnan Ganeshapillai **Tanzania** Jane Theclar Keto **Thailand**
Lamai Ponchomchun / Sri-Air Suttisan **Zambia** Pennah Sautale*

1994 **Bangladesh** Shyamal Prokash Adhikary / Habib Ahsan /
A.K.M. Faziul Huq **India** Chandraprabha G. Ghargre /
Chozhule Kikhi / Lienkhomang Lhoujem / Lily Luisa
Nateson / Tabitha Naulak / Medonuo Venyo / Thenmozhi Balakrishnan
Indonesia Setiawan Sitepu* **Kenya** Mary Juliet Chipa* / Muthoni Madrine
Gatumu / Paul Mbuthia Mutune* **Myanmar** Saw Melvin Eway / Steven Van Bik
Nepal Bhim Prasad Adhikari **Nigeria** Ezekiel Adekunle Adejuwon **Pakistan**
Liaqat Ali **Philippines** Guillermo F. Magbag / Hossana F. Guzman **Sri Lanka**
Dhiunugalge E. K. Mendis / Sarathchandra W. Fernando **Thailand** Raungchai
Putichan **Uganda** Stuart Sempala

1991 **Bangladesh** Sikha Roy / Rekha Sarker **Ethiopia**
Belachew Lemma Tolla **India** John Yesuadian Manoga-
ran / Tychicus C. Devanand / Marosang Kilang* **Indonesia**
Debora Purada Sinaga **Japan** Satoshi Tsukamoto **Kenya** Grace Wambui
Mbae **Myanmar** U Maung Muang / Saw Andrew Chan Poo **Nigeria**
Oluseglin-Alaba Olaleye **Philippines** Ester Tacakena Rufino / Julito Verdin
Serna / Esperanza Decina **Sri Lanka** Chandana K. Senaratne / Laxman M.
Palamura **Taiwan** Kuo Hsiung Chiu **Tanzania** Martha Sifuel Shayo
Thailand Smai Sae-Pae / Torsak Prakhomthong / Tadchunne Vayamhasuwan-
Zambia Susi Roda Nachula

1995 **Bangladesh** Martin Adhikary / Frida Diaz / Samarendra
Mitra **Ghana** Albert Kofi Adamu **India** Atouu Kezi-
enuo Sekhose / Kimjalum Touthang / Dal Ngo Sukzo
Bawmkhai / Bijan Krishna Mandal / Lanotla Kasar / Bibeka Nanda Biswal /
Ningreiwon Angkang **Indonesia** Aatje Carolina Tirie **Japan** Yoko
Tsuchizaki **Myanmar** Ela Mee / Kai Seng Maran **Nepal** Krishna Bahadur
Thapa / Murari Mohan Adhikari / Sayni Chaudhary **Philippines** Celenia Luci
Jamig / Wilfredo C. Vargas **Guinea Bissau** Amadu Mustafa Jau **Sierra**
leone Abu Bakarr Kamara **Sri Lanka** M. D. W. G. Jayawardene / Sarath
Laksiri Peiris / Nimal Rnandewa Lokuliyana **Uganda** William Kigongo* / Elly
Kuteesa Wasswa Mwanje

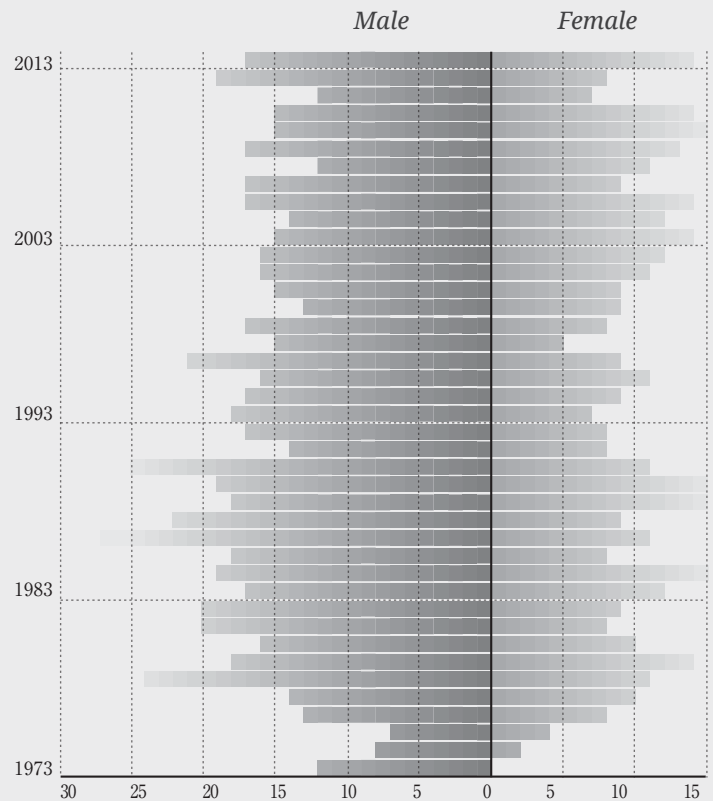
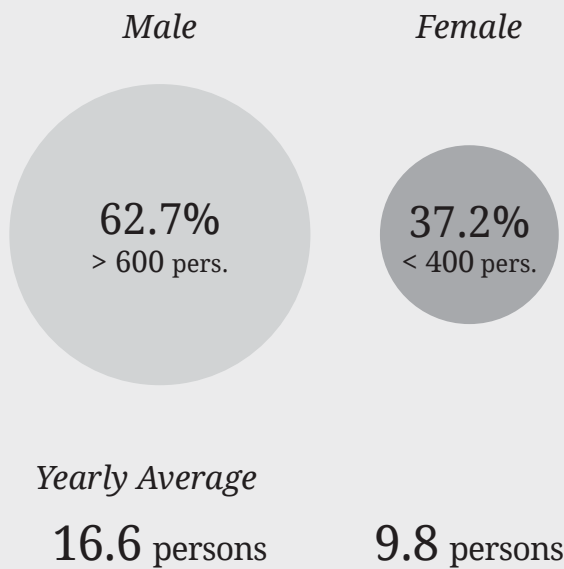
1992 **Bangladesh** Biswas Kashinath / Mridha Sunil Kumal /
Shila Dewri **El Salvador** Jose Antonio Serrano **India**
Namridinbou Charenemei / Shanmgam Ayyappan / Zimik
Mingthingla **Indonesia** Tandjaja Santje / Sinuhaji Sarjana / Justus Junus
Puasa **Japan** Eiko Mukae / Konno Satoru **Kiribati** Been Toromon **Korea**
Shin Hyun-doo / Park Han-sook / Lee Sang-chung **Myanmar** Dau Gyung
Philippines Celito Grona Penos / Loida Galilea Lianora **Sri Lanka** Seyed
S. S. Alalvi / Gamalathge D. G. Kalyanie **Tanzania** Pamfili Satori Masashua
Uganda Elisha Kayabya **Zambia** Judith Chilufya Lingashi

1996 **Ethiopia** Sahlesilassie Amare Abebe / Asres Bezuwork
Mersha **Ghana** Augustine Yaw Opoku **India** Juliet
Theresita / Shamanthaka David / Sentiyanger Jamir /
Ningtharla Khapudang / Saikhuma Ralte **Indonesia** Gultom Suniarny Tiorman
Japan Hiroaki Imaizumi / Rie Ikemoto / Muneo Ishikawa / Terumi Miura /
Hiroshi Nishijima / Jun Hanaoka **Kenya** Tabitha Wanjuki Munyi **Korea**
Park Kee-yang **Madagascar** Germain Ranaivosoa **Myanmar** Thang Hlun
Nepal Shiva Prasad Dhungel / Juddha Bahadur Thapa **Papua New Guinea**
Leon Ban Yall **Philippines** Tita Garcia Matusalim / Agalyn Diola Salah **Sri**
Lanka U. L. Mohammed Naseer **Tanzania** Rose Shiwala Mattu **Thailand**
Sanoh Promsawat / Udorn Piewkhaow **Uganda** Twesigye Richard Tumusiime
Sierra Leone Morris Bernard Foday

1993 **Ghana** Albert Donkor **India** Hmingthangi Colney /
Letkhojang Touthang / S. Pusuhu Theluo / Cherian Mar-
kose / Ramchan Philip Ruivah **Indonesia** Wesly Lingga
/ Anna Christina Pangaribuan / Lerritio Ariati Panjaitan **Japan** Tomokazu
Takeyama / Akiko Kanematsu **Korea** Park Soon-ja / Lee Ree-aae **Nepal**
Ratna Dhungel / Hari Bahadur Shrestha **Philippines** Rogelio M. Legaspi
Sierra Leone Idrissa Deen Kamara **Sri Lanka** A.N. Ganewatta / Upasena
Samarasinghe **South Africa** Ngcingwana Thembeke **Tanzania** Vincent
Yindi Nzuzu / Ninian Zacharia Ssebuyoya **Thailand** Panya Mankeb /
Lanthom Jonjousong **Uganda** John Moses Busulwa

1997 **Ghana** Thomas A. Adzey **India** Lhingnu Touthang /
Sunil Singh / Ngulie Rentta / Regimon Markose /
Paokame Longpane Lanio / Gwayhunlo Khing Rengma
Japan Takanori Satoyama / Naoyuki Tasaka / Munetada Yasuda / Nobuyuki
Tagashira **Kenya** Geoffrey M. Musyoka **Myanmar** Donald Paul **Nepal**
Kalpana D. Devkota **Nigeria** Joy Onyebuchim Ajima **Papua New Guinea**
Gemtausu Rufus Atusamu **Philippines** Eugene L. Ofo-ob **Sri Lanka**
Bandula Weerasingha / Indunil Paranawithana **Uganda** Gorreth Nabasiry*

Ratio of female and male Graduates



1998 **India** Jisaya Tandia / Thongkhup Doungel / Shamim Sylvaster Gamal / Robert Gabriel Machado / Tlau Lalhingthanga **Indonesia** Mathius Sarangnga / Dina Hendrina Rumsaur* / Benni Maklianto Siregar **Japan** Masaru Yamazaki / Fumiko Yasuda / Hitoshi Kato **Kenya** Charles Okoth Owako* **Korea** Lee Moo-heun / Gie Cheal-suu **Lesotho** Teboho Fabia Kulati **Myanmar** Naw Lee Myar **Nepal** Shanta Chaudhary / Ram Hari Devkota / Sushma Pant **Philippines** Fortunato Rosel Jr. / Jovy Bantang Fodulla **Sri Lanka** M. Sumanananda Thero / Wiraj Nallaperuma **Tanzania** Regina Bamuhiga

1999 **Ethiopia** Getachew Gebeyebu* **India** Vanlal Muanpuia Bapui / Onkholun Haokip / Enigar Rympiet / Khaling Shanganaidar Tontang **Indonesia** I Gede Mustika **Japan** Mamiko Yoshida / Junko Marutani / Kaori Sakuma / Kisaku Uchida / Yoko Yamazaki **Kenya** Moses Ochieng Ochiel **Korea** An Cheon-seong / Lee Keun-ju **Liberia** Miatta Tata Roberts **Myanmar** Saw Borneo / Nang Shwe Htwe / Mai Yuzana Tun Than / U Shi Moa **Pakistan** Gulnaz Sohitra **Papua New Guinea** Davidson Dineyal Makaupa **Sri Lanka** A. Chanaka Thilakarathna

2000 **India** Zacivolu Rhakho / Joseph Abonmai **Indonesia** Liberthin Tarigan / Josep Pariaungan Matondang / Samuel Sihombing **Japan** Makoto Abe / Harumi Sato / Ayumi Ishii / Suya Fujisawa **Kenya** Jane Muthoni Kaburu / Wenslause Khaoya Mukhwana* **Liberia** David Gayflor Foday Sr. **Myanmar** Mai Hnin Yi / U Myint Nwe **Nepal** Mohan Das Shrestha **Philippines** James Ngala Boliget / Ned Tim Galing Mapangdol / Gabriel Edjan Estil / Aquilino Tagle Toledo **Sri Lanka** D.S. Pathmasiri / Niranjala Hemamalee Manchanayaka / J.A. Chamika **Tanzania** Christina Aletaramo Kwayu **Uganda** Josemarie Kizito

2001 **Bangladesh** Tapoti Rani Baidya **Cambodia** Phalla Chea **Ghana** Bernard Timothy Appau **Haiti** Deslandes Exil **India** Grace Valliammal Munuswami / Sheela Nayak / Santan Elias Gonsalves / Pfokehrii B. Kape **Indonesia** Hardy L. Tobing / Ramos Simanjuntak / Juris Tarigan **Japan** Harutaka Hamada / Rokuji Kitahara / Shoko Koshida **Kenya** Pamela Akoth Okoth **Korea** Son Daniel **Liberia** Jeremiah Mataldy Bondo / Marpue Mamba Speare **Myanmar** Lazarus / Sai Noon / Aung Thwin Oo **Pakistan** Asiaa Khan Rasheed **Philippines** Daniel Kon'ek Longatan **Sri Lanka** Annet P. Kabistan Royce / Hemalatha Kulathunga / Iyampillai Loganathan **Zambia** Judith Friday Daka

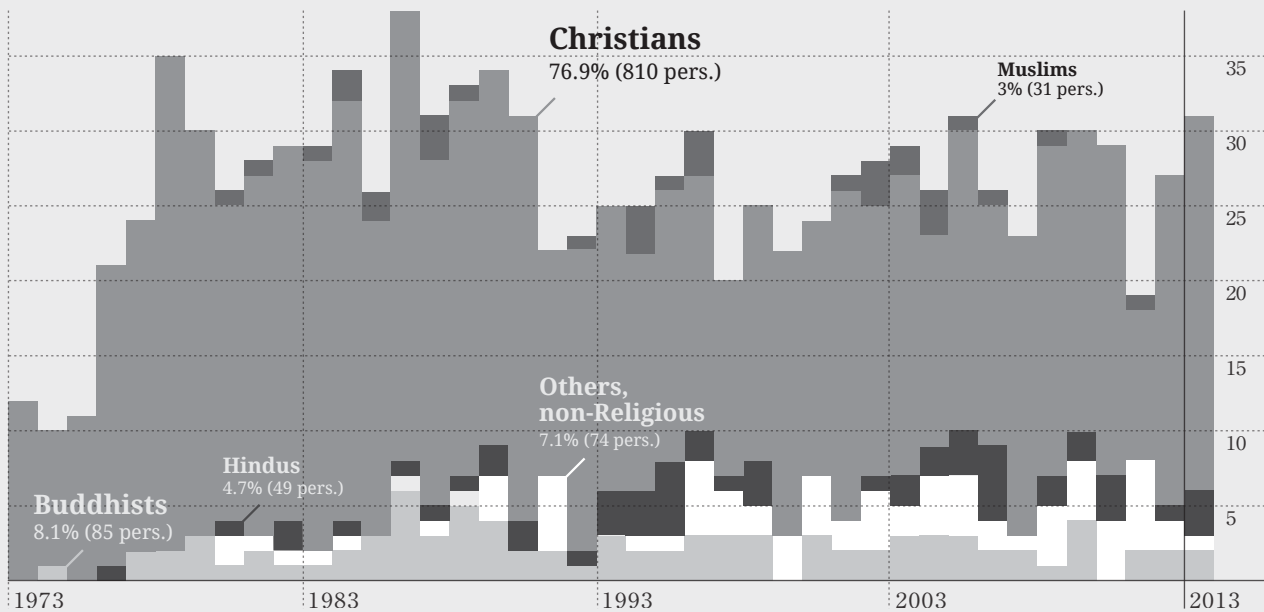
2002 **Bangladesh** Nasima Khanam* / Shahinur Begum / Victoria Biswas **Cameroon** Billian Nyuykighan Njodzeka **India** P. Losa / Narayanan Kaliyodath / Arulappan Arokiadoss / Noble Chandradoss Gemberam **Indonesia** Janri Parknson Damanik / Rein Justin Gultom / Jonsen Sembiring **Japan** Keiko Kawaguchi / Naoyoshi Watanabe / Haruka Kubota / Yoshimitsu Asaina / Natsuko Furukawa* / Yoichiro Shindo **Liberia** Grace Miller-Kanadakai **Myanmar** Ro Khar Thang / San Min Tun / Stylo **Pakistan** Saima Naheed Sohotra **Philippines** Susana Mabuan Indino / Gregorio Atanacio Villanueva **Sierra Leone** Alie Bangura **Sri Lanka** K. Hemajith Premarathna* / T.L. Mahammed Makeen **Thailand** Ketsuda Phutta

2003 **Bangladesh** Afrosa Siddika **Cambodia** Sothea Sok **Cameroon** Sylvester Enongene Nzene / Glory Zuh Azenoi **Gambia** Lamin Badjie **Ghana** Theresa Adoabea Twumasi **India** Vijayasingh Ronald David / Jojo Augustine **Indonesia** Jumarni / Tigor Sibombing / Merli Simbolon **Japan** Taichi Kimura / Kimio Murakami **Kenya** Andrew Onyango Achar **Korea** Woo Eui-bom **Liberia** Dorcas Reeves Smith **Myanmar** Ni Ni Myint / Twa Mann / Saw Jackson / Brang Nu **Nepal** Meena Bhandari **Philippines** Milagros Cama-eg Dapuyen **Sri Lanka** Subramaniam Sivapackiyam / Subashinee Jayasekara / Komathy Arumugam **Tanzania** Restituta Gabriel Kanoni **Thailand** Saengthip Khemarat **Uganda** Candiga Samson

2004 **Bangladesh** Swopan Adhikary / Shefaley Begum / Salema Khatun / Shaheen Naznin **Cameroon** Dohnah George Foncha **Ghana** Amos Banmarigu **India** Muthu Kuttadamma / Jayesh Saloman Kambale / Edwin Margaaret Molomoo **Japan** Makito Fujii / Chiemi Tachibana / Hiroyuki Inoue / Harue Shimizu / Masanori Osaka **Myanmar** Amos Di Van / Ngai Men **Nepal** Til Kumari Pun / Ram Raji Pokhrel **Nigeria** Isaac Adegoke Okunloye **Philippines** Phoebe Delmonte Mission / Alma B. Leyson / Gilbert Pinnoy Hoggang / Gaudencia Melon Tinagan **Sri Lanka** M. Renuka B. Gunawardanae **Uganda** Jean Pierre Ntegyeye **Zambia** Paul Samba

2005 **Bangladesh** Shikha Rozario / Rina Adhikary / Farhana Akter / Aney Sarkar **Benin** Mahoussi Joseph Gbedji **Bhutan** Rajan Rai **India** Thangsat Kipgen / Madhabi Lata Mondal / Sharadamma / Kunjunjamma Charivukalayil Samuel / Mutsezo Tetseo **Indonesia** Veny Julita Tampubolon / Tumiari Simatupang Togatorop

Numbers and Ratios of Graduates' Religions



Japan Hiroyuki Tanaka / Miyuki Okabe / Mitsumi Orita / Yuta Sawai / Moichi Hayata **Liberia** Priscilla Entsua / Grace Agordo **Myanmar** Tum Hniang / Daniel Myo Aung / Sa Mu Ye Bya / Mg Than Khaing **Nepal** Ratna Parasad Sapkota **Philippines** Ariel Guiquin De la Cruz / Catalino Abatayo Genayas Jr. **Sri Lanka** Ranjani K. Adikarinyaka Mudiyansele / Janaka A. D. Polambegoda Polambegoda **Uganda** Jolly Charles Takoowa Kalema **Zambia** Habeenzu Simamba

2006 **Bangladesh** Rina Rani Moulik / Mir Suraiya Ahmed Tutu / Biswajit Kumar Sarker **Benin** Kochole Etienne Obossou **Cambodia** Veasna Ouk **Cameroon** Moses Abora Abia / Oscar Fortsin Nkweche / Theodora Tirbaban **India** Channappa Gavirangappa / Mary S. Pungroila Maram / Babycha Devi Mangsatatabam **Indonesia** Sihar Alaris Sinaga / Osten John Matondang **Japan** Hikari Aoki / Koshi Ito **Korea** Jang Se-hoon **Liberia** Wiyata Johnson Nimley **Myanmar** Neely Lai Uk / Za Khar **Nepal** Tejendra Poudel **Philippines** Annaly C. Rosaban / Lourdes Augusto Sison **Sierra Leone** John Ansu Charles **Sri Lanka** Nagulenthiran Nallathamby / Buddhi Sapumal Jayabandare **Tanzania** Domitien Kabura

2007 **Bangladesh** Arati Modhu **Cameroon** Joseph Mbah Tenjoh / Mbivka Jane-Francis Berinyuy / Eric Dindze Tangka / Fomujong Florence Mah Fon **Ghana** George Offin Owusu-Ababio **India** Toshang Khaling / Reeta Sinruwng **Indonesia** Bahara Sihombing / Gede Suarna / Emmy Lasmaria Rajagukguk **Laos** Phone-sawanh Dittaphong **Madagascar** Vincent Mbolaniaina Rakotoarisoa **Myanmar** Nang Ngwe Kyi / U Aung Saik / Tial Chin Thluai **Philippines** Jade F. Alipoyo / Dario Telen Lacaya / Genalyn Magsigay Oliveros / Fred B. Balintay **Solomon Islands** John Mark Male **Sri Lanka** S. Chandra P. Mallawarachchi / D. Chandrasiri Udumulla

2008 **Bangladesh** Rehana Parvin **Cameroon** Samson Nito Ekwe / Neh Augustina Wanki **Ghana** George Kwame Koomson **India** Jaji Karumbaiah Kudiya / Ricky Nelson Renthlei / Eleazer Raingam / Menovino Krose **Indonesia** Junpiter Hasilholan Pakpahan / Gani Silaban **Japan** Makiko Uchida / Tomoyo Doi / Ayako Ishida **Kiribati** Tebweretaake Tokantetaake **Liberia** Jatu Melissa Wilson-Kollie / Patrick Molay Asumana **Myanmar** Mya Sandar / Sang Hre / Sung Hnem / Uhtilo Elijah Modu **Nepal** Bikash Subedi **Papua New Guinea** Ekep Puluma **Philippines** Renato Ngayawen Guilingen / Josie Ngikit Dinampig / Nicholas Pahanggin Tahuyan / Mamalyari Baclay Soria **Solomon Islands** Ismael Agee Meke **South Africa** Nozuko Patricia Toli **Sri Lanka** Mathiyaparanam Ramachandran / H. Lasitha Udaya Kumara

2009 **Cambodia** Ban Ven **Cameroon** Ajong Christina Fonge **China** Chun Xia Guo **Ghana** Kingsley Namka Nurokina **India** Karunan Sudhakar / Mangvung Hechin Lheikho-chin Haokip **Indonesia** Hugo De Groot Nababan **Japan** Tatsuya Higashijima / Erika Saito / Moe Takenoshita / Maiko Horiike **Kenya** Emmanuel Karisa Baya / Kisimbiri Francisco Singoro **Laos** Houmphan Sengchanthong **Myanmar** Saw San Doh / Saw Shekina / Sheila / Naw Pathi Paw **Nepal** Bishwa Raji Gurung / Roshani Kunwar / Nir Maya Rana **Pakistan** Mahnaz **Philippines** Nazario Dulnuan Tuginay / Marie Lomino La-ao **Sierra Leone** Josephine Memuna Sharka **Sri Lanka** H. Thushara Nilmini **Thailand** Khanuengnit Polkhayan / Siwakorn Odochao **Togo** Edo Agbodo **Zambia** Lilly Kudzai Phiri

2010 **Brazil** Lucinei Luiz Telles **Cambodia** Daneth Him **Democratic Republic of Congo** Nday Kyoni John **India** Bongmoingam Khaling / Muzipolu Nyeka **Indonesia** Reinhart Siregar Parlaungan / Saulina Solin / Kalpin Sembiring **Japan** Kusaka Hoshino / Reina Sakai / Takeru Sugaya **Kenya** Baya Comulius Katana **Kiribati** Mote Teangoa **Liberia** Cooper Kaletona Siakor / Mary Tenneh Kpaka **Malawi** Macdonald Francis Njala Banda **Myanmar** Ngun Tial / Saw Manar / Hniang Tial / Hla Zet **Nepal** Sunita Rana / Sandeep Lamsal **Philippines** Annie Jane Langunas Lagawan / Christopher Denito Domulot / Lester Constantino Manligot Dipit **Sri Lanka** Sumathi Vithilingam / Nilushini Karunadasa **Uganda** Mugwanga David Hannington Luvumu **Zimbabwe** Melody Gapara

2011 **Cameroon** Ataba Jude Fonsah **Haiti** Jean Gontran Delgrace **India** Siby Mathew Periakkottil / Clement Raja **Indonesia** Syamsul Asinar / Lidia Hotmaida Naibaho / Lilin Surianti Zentrato **Japan** Yasutomo Kido **F.S. Micronesia** Glorian Dahioboi **Myanmar** James San Aung / Bya Myar / Paing Kui / May Su Win **Nepal** Bihari Chaudhary **Philippines** May Grace Maglangit-Maboloc **Sierra Leone** Fatmata Kamara Frances **Sri Lanka** M. K. Pathirana Arunodh **Thailand** Kassirin Phiboon **Zimbabwe** Munetsi Hokonya

2012 **Brazil** Joelma Gomes de Queiroz **Cameroon** Joseph Banla Bongajum **Haiti** Nerlande Baptichon **India** Adarsh Aralugowdana Chandraju / Chonglise Sangtam **Indonesia** Margareth Marta Sianipar / Soniman Waruwu **Japan** Yuta Takeno / Kengo Ishida **Liberia** Comfort McCarthy / Alexander Saturday Kerkula **Malawi** Tito Herbert Lezile / Catherine Mtambo **Malaysia** Veni Ester Daniel **Myanmar** Htun Lwin / Sang Bik Cem / Act Ka Hti / Thaug Si **Papua New Guinea** Joseph Kora **Philippines** Wilson Dicag Ignacio / Dolphe Tindaan Litawan **Democratic Republic of Congo** Kavira Kaniki Salome **Sri Lanka** M.P. Niroshan Hemantha / W. Gedara Gunaratne **East Timor** Juliao Nunes Jose / Armando Ximenes **Uganda** Emmanuel Ssempiira

Asian Rural Institute

Graduates of the Advanced Training Course

(76 persons)

The Advanced Training Course was established in 1986. Overseas graduates who have lived and worked in their countries for at least five years after their ARI training can apply to be a “Training Assistant” (TA) for further studies in a certain topic. Besides pursuing his or her own research, the TA aids in conducting the ARI training alongside the staff members.

Japanese graduates are eligible to apply for a second year of study as “Graduate Interns” (GI), following the year of their training. The GI chooses one field of agricultural research to enhance his or her experience. Further, as an accustomed member of the ARI community, the GI fulfills a supporting role in all aspects of daily life.

1986	Arun Korkaew	Thailand	2000	Liaqat Ali	Pakistan
1987	Ding Rin Brang	Myanmar		Kisaku Uchida	Japan
	Wichien Poungporn	Thailand		Yoko Yamazaki	Japan
	Chatchai Rachasuwan	Thailand	2001	Stuart Sempala	Uganda
	Leam Wongphabood	Thailand		Hossana F. Guzman	Philippines
1988	Cherdchai Chaiwong	Thailand		Suya Fujisawa	Japan
	Narong Tongsuk	Thailand	2002	Gemtausu R. Atusamu	Papua New Guinea
1990	Agnes A. Anas	Ghana		Sayni Chaudhary	Nepal
	John Reuben Abdul Haq	Pakistan		Rokuji Kitahara	Japan
	Vigneswaran Theivendram	Sri Lanka		Harutaka Hamada	Japan
1991	Sujit Kumar Baroi	Bangladesh	2003	Dipak Kumar Ghosh	Bangladesh
	Cephas Sinoya	Zambia		Donald Paul	Myanmar
	D. A. Ariyadasa	Sri Lanka		Keiko Kawaguchi	Japan
	Julia Linda Defeo	Philippines		Yoichi Shindo	Japan
	Prakit Kumduang Dao	Thailand		Haruka Kubota	Japan
1992	Vekriyi Venyo	India		Natsuko Furukawa*	Japan
	Roberto Galindo Dalisay	Philippines	2004	Laksiri Peris	Sri Lanka
	Teresa Nkosazana Chiya	Swaziland		Jovy Fodulla	Philippines
1993	John Nyondo	Zambia		Cherian Markose	India
	J. K. Walter Silva	Sri Lanka		Kimio Murakami	Japan
	Alvarez Maximo Clave	Philippines	2005	Bibeka Nanda Biswal	India
1994	Zosimo Juntereal Buerano	Philippines	2006	D. E. K. Mendis	Sri Lanka
	A. J. Menike Petikiri	Sri Lanka		Hiroyuki Tanaka	Japan
	Hupuabou Newmei	India		Mitsumi Orita	Japan
	Godfrey Mutesasira	Uganda	2007	B. Timothy Appau	Ghana
	Mayonsing Vashinao	India		Naw Lee Myar	Myanmar
1995	Joaquim Fernandes	India	2009	Rhakho Zacivolu	India
	Preticia Kamei Tongsuk	India		Shanta Chaudhary	Nepal
1996	Elias Jackson Bugoke	Tanzania		Saw Jackson	Myanmar
	Debora Subaga Purada	Indonesia		Makiko uchida	Japan
	Surender Singh	India		Tomoyo Doi	Japan
1997	Julito Verdin Serna	Philippines		Ayako ishida	Japan
	Loida Galilea Lianora	Philippines	2010	Moe Takenoshita	Japan
	Jun Hanaoka	Japan	2011	Miatta Roberts Sirleaf	Liberia
1998	Era Colmo Espana	Philippines	2012	Lourdes Augusto Sison	Philippines
	Yohanis Tandung	Indonesia		Veny Julita	Indonesia
	Takanori Satoyama	Japan		Yasutomo Kido	Japan
	Munetada Yasuda	Japan			
1999	Wesly Lingga	Indonesia			
	Masaru Yamazaki	Japan			

1986-2012

Board of Trustees

1973–1982 Toshihiro Takami / Walter Shore / Masayoshi Gunji / Haruo Fukumoto / Arthur Kamitsuka / Masaaki Nakajima / Hajime Kikuchi / Kiyoshi Ogawa / Joji Hanabusa / Sakae Endo / A. E. Mathews / Atsuji Tajima

1983–1992 Toshihiro Takami / Atsuji Tajima / Haruo Fukumoto / Sakae Endo / Masaaki Nakajima / Hajime Kikuchi / Kiyoshi Ogawa / A. E. Mathews / Ayako Sekiya / Kentaro Shiozuki / Gretchen DeVries / Toru Hara / Namio Fuse / Ryusuke Fukuda

1993–2002 Toshihiro Takami / Atsuji Tajima / Haruo Fukumoto / Namio Fuse / Toru Hara / Masaaki Nakajima / Ayako Sekiya / Ryusuke Fukuda / Hideo Kikuchi / Yoshio Tamura / Yoshiko Isshiki / Jintaro Ueda / Hoichi Endo / Lee In-ha / Yasuo Furuya / Koa Tasaka / Masaaki Hoshino / Akira Niwa

2003–2013 Yasuo Furuya / Koa Tasaka / Ryusuke Fukuda / Yoshio Tamura / Lee In-ha / Masaaki Hoshino / Hoichi Endo / Jintaro Ueda / Akira Niwa / Satoru Kuze / Tadashi Yamada / Teruko Niwa / Isao Nozaki / Kenichi Otsu / Noriaki Sato / Isamu Koshiishi / Hideharu Kadowaki / Junko Inuma

Auditors

1973–1982 Michio Oyamada / Hajime Ogawa / Kentaro Buma

1983–1992 Michio Oyamada / Kentaro Buma

1993–2002 Michio Oyamada / Kentaro Buma / Akira Funatsu / Tokichika Harada

2003–2013 Akira Funatsu / Tokichika Harada / Hideyuki Oya / Masaaki Shibui

Councilors

1973–1982 Masaaki Nakajima / Yasuo Furuya / Masao Takenaka / Shinkichi Eto / Kentaro Shiozuki / Norio Naito / Lee In-ha / Yoshio Fuse / Kanji Shimada / Shozo Matsushima / Hajime Kikuchi / Masayoshi Arisawa / Kiyoshi Nagashima / Isao Nozaki

1983–1992 Masaaki Nakajima / Yasuo Furuya / Masao Takenaka / Shinkichi Eto / Kentaro Shiozuki / Norio Naito / Lee In-ha / Yoshio Tamura / Satoko Kono / Um Tae-sung / Yoshiji Minakawa / Hideo Kikuchi

1993–2002 Masaaki Nakajima / Yasuo Furuya / Masao Takenaka / Shinkichi Eto / Kentaro Shiozuki / Lee In-ha / Namio Fuse / Kanji Shimada / Shozo Matsushima / Ayako Sekiya / Hideo Kikuchi / Kiyoshi Nagashima / Takeo Yasui / Alicia Gibaga / Barbara Mueller / Yoshio Tamura / Yoshiji Minakawa / Um Tae-sung / Noriaki Sato / Kiyoshi Takai / Teruo Miura / Azuma Yamagata / Toshitsugu Arai / Yasushi Kurosu / Fumio Hamao / Maki Fushii / Shunji Harada / Jun Hasegawa / Ken Omiya / Sarah Oba / Satoshi Tsukamoto / Mitsuo Fukumoto / Yoshio Ushio / Tadashi Yamada / Masahiko Yamane

2003–2013 Hideo Kikuchi / Kanji Shimada / Um Tae-sung / Noriaki Sato / Toshitsugu Arai / Shunji Harada / Jun Hasegawa / Sarah Oba / Mitsuo Fukumoto / Yoshio Ushio / Tadashi Yamada / Masahiko Yamane / Satoshi Tsukamoto / Kiyoshi Nagashima / Teruo Miura / Azuma Yamagata / Toshimasa Yamamoto / John B. Hoover / Tomoko Arakawa / Isao Kikuchi / Mitsuru Nakamura / Akira Niwa / Masaaki Hoshino / Hoichi Endo / Yukio Miyazaki / Soo Boo Lee / Koshi Ito / Osamu Arakawa / Steven Cutting / Jintaro Ueda / Isao Nozaki / Ryusuke Fukuda / Satoru Kuze / Muneo Ishikawa / Isamu Koshiishi / Katsuyuki Kanno / Kazue Yamaguchi / Michiru Yoneda / Kaori Sakuma / Noriyuki Mori / Mihoko Ejiri

Staff

(including full time, part time and contract staff)

1973–1982 Toshihiro Takami / Haruo Fukumoto / Sachiko Arisawa / Masayoshi Arisawa / Gretchen DeVries / Tadashi Igusa / Hajime Kikuchi / Yoshiko Tachibana / Kazuo Makino / Kiyoshi Nagashima / Yasuko Sekiya / Miyoko Kobayashi / Shigeo Asai / Isao Nozaki / Yasuko Takami / Kohei Goshi / Noriko Okada / Mario Barbery / Joy Barbery / Miyoko Oshima / Masae Sakurai / Takeo Yasui / Fuji Kikuchi / Natsuko Hozumi / Hideko Yoshida / Harue Kimijima / Micho Yokozeki / Toshiaki Kusunoki / Maki Onuki / Keo Inthavongsa / Etsuko Yamada / Yuko Mori / Junko Miyamoto

1983–1992 Toshihiro Takami / Hajime Kikuchi / Haruo Fukumoto / Sachiko Arisawa / Masayoshi Arisawa / Isao Nozaki / Yasuko Takami / Harue Kimijima / Fuji Kikuchi / Gretchen DeVries / Joy Barbery / Etsuko Yamada / Takeo Yasui / Shigeo Asai / Teruo Miura / Kiyoshi Nagashima / Yuusuke Kubo / Kazumi Sato / Akiko Miyaoka / Junko Watanabe / Dick Jonson / Toshiaki Kusunoki / Tsuneko Sawaya / Yoko Yasui / Shigeo Imura / Nobuko Ishii / Aiko Yamagata / Azuma Yamagata / Keiichi Kobayashi / Jun Kakinuma / Takeshi Murakami / Kazuko Soma / Satoko Kono / Yukiko Nakaya / Toshio Inamoto / Keiko Ijima / Miwa Suzuki / Atsuko Matsumoto / Rueben Haq / Alicia Gibaga / Scott Hirano / Barbara Mueller / Takaaki Nagamatsu / Saori Nagamatsu / Satoshi Tsukamoto / Kaori Takami / Makiko Tomita / Toru Hara / Junko Miyamoto / Miyoko Tanaka / Sachiko Yagizawa / Jean Lloyd / Sonoko Tomura / Hideo Kikuchi / Masako Kikuchi / Shin Takami / Hiromi Sawaya / David Marcle / Hisako Marcle / Shoko Hasegawa / Kyoko Ogura

1993–2002 Toshihiro Takami / Kiyoshi Nagashima / Toru Hara / Takeshi Murakami / Hoichi Endo / Barbara Mueller / Hatsue Kishi / Midori Ashida / Nobuko Ishii / Toshio Inamoto / Katsuno Fujita / Takaki Nagamatsu / Saori Nagamatsu / Makiko Tomita / Yusuke Kubo / JB Hoover / Miwa Suzuki / Alicia Gibaga / Takeo Yasui / Kazuko Sohma / Shoko Hasegawa / Keiichi Kobayashi / Naoto Ikesako / Azuma Yamagata / Wijendra De Silva / Jintaro Ueda / Teruo Miura / John Reuben Haq / Park Mi-Ae / Minako Ikeda / Yoshitaka Yamagami / Makoto Miyajima / Aogu Uno / Tomoko Arakawa / Sarah Oba / Kumiko Ono / Junko Tanaka / Ikuko Yamagami / Hiroshi Katagiri / Satoko Ikesawa / Yukiyo Ito / Nancy Molin / Masako Adachi / Namie Ikuta / Jun Hanaoka / Katsuhisa Yamasaki / Muneo Ishikawa / Kaori Sakuma / Nanami Omura / Yoshiko Yamaguchi / Yasuo Furuya / Josephine Aguilar / P.A. Jayasundara Menike / Kyoko Kato / Yoko Yamazaki / Takanori Kikuchi / Fumiko Nakashima / Koa Tasaka / Satoshi Tsukamoto / Osamu Arakawa / Yuko Endo / Takanori Satoyama / Mamiko Yoshida

2003–2013 Toshihiro Takami / Koa Tasaka / Teruo Miura / Josephine Aguilar / Tomoko Arakawa / Osamu Arakawa / Hoichi Endo / Junko Tanaka / Kaori Sakuma / Yuko Endo / Kiyoshi Nagashima / Katsuno Fujita / Yoshiko Yamaguchi / Nobuko Ishii / Muneo Ishikawa / Yukiko Oyanagi / John B. Hoover / Takanori Satoyama / Azuma Yamagata / Midori Ashida / Mitsue Kimijima / Yoshitane Murao / Satoshi Tsukamoto / Susan Adams / Ban Hyung-wook / Chung Jeen-hae / Steven Cutting / Noriyuki Mori / Yuko Murakami / Mitsuru Nakamura / Takako Ogura / Nozomi Takimoto / Michiko Sugawara / Isao Nozaki / Laksiri Peiris / Azusa Miyaki / Hiroko Goto / Hideji Kijima / Toshiaki Kusunoki / Takeshi Aoki / Yoshiki Nagatani / Gilbert Hoggang / Hiromi Sato / Kazuhiko Takeuchi / Akari Nakamura / Timothy B. Appau / Naw Lee Myar / Minori Nakajima / Kenichi Otsu / Zacivolu Rhakho / Sanae Kabeya / Atsushi Yamaguchi / Masayo Fukushima / Jonathan McCurley / Takashi Yamashita / Thomas Itsuo Fujishima / Yumiko Nishi / Takashi Otani / Kathleen Froede / Mayu Kamimura

ARISA Directors ARI Supporters Association

Kohei Goshi / Tomio Muto / Kyoza Yuasa / Yoshiko Isshiki / Shinkichi Eto / Noriaki Sato

AFARI Directors American Friends of ARI

Roger Manners / Dave Cutting / Pam Hasegawa

The past and future 40 years

When looking at old pictures of ARI, it is sometimes difficult to guess in what year each one was shot. Many of the photos depict similar scenes: People from different countries working in the fields with simple tools, scooping pig manure or singing songs together. Although the ARI training program has evolved over time, there seems to be something that has remained since 1973, when it first started - the joy of a humble communal lifestyle close to the soil.

Of course, the world around ARI has dramatically changed since 1973. The global population has almost doubled. These days, more people live in cities than in rural areas. Globalization has become a force of incalculable transformation, spreading information, capital and migrants across a planet aching under man-made disasters. In the near future, even more extreme changes are predicted.

Given the looming challenges of tomorrow and the arbitrary course of history, we must ask ourselves: Will ARI still be relevant in the future for rural people of 2033 or even 2053?

ARI's mission is rooted in the love of Jesus Christ. This love is meant to be translated into service to those in need: For everybody suffering from social violence, hunger, pollution, armed conflict and climate catastrophes. For forty years, ARI graduates have been leading such people towards self-reliance, justice and peace. In more than fifty countries, they practice and teach sustainable agriculture. Some establish water irrigation and health care. Some work in remote places without infrastructure. Some are involved in disaster relief, others work for refugees. Many graduates educate children, including HIV orphans and former child soldiers.

We at ARI believe that positive, lasting transformation can come through the creativity of these people at the grassroots. Examining our past, our approach of cultivating food locally in environmentally friendly ways has proven to be a key solution for any age. Aided by supporters, we can overcome unprecedented crises, such as the Fukushima disaster. As we continue forward we hope to improve our training for the next generation of leaders by listening carefully to our graduates' experiences. As Scripture says, "the poor will never cease to be in the land." Through its education program ARI will continue walking with grassroots people, step by step, on a path to dignity.

Forty Years of Walking Together with Grassroots Leaders

Publishing Office

Asian Rural Institute, Rural Leaders Training Center
329-2703 JAPAN. Tochigi-ken.
Nasushibara-shi. Tsukinokizawa 442-1
tel: 0287-36-3111 fax: 0287-36-5833

Publisher

Kenichi Otsu

Publication Date

September 16, 2013

Printing

Tochigi Minpo Matsumoto Insatsu-sho, Inc.

Editing Committee

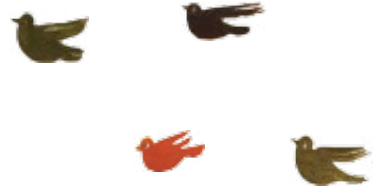
Kenichi Otsu
Junko Tanaka
Kiyoshi Nagashima
Jonathan McCurley
Hajime Kikuchi
Toshiaki Kusunoki
Thomas Itsuo Fujishima

Translator

Michiko Sugawara

The theme song of ARI

Take My Hand



VERSE 1

F *dmin* *Bb*
I'm calling to the country folk who work upon the land
F *dmin* *gmin* *C7*
To come and see the vision we have shaped into a plan
dmin *amin* *Bb* *G*
Side by side we'll find a life of strength and dignity
gmin *F* *gmin* *Bb* *C7*
Until the day we all can feed ourselves we never will be free

CHORUS

F *C* *F* *gmin* *Bb*
Take my hand which has labored in the soil
F *dmin* *Bb* *C*
Together we will stand for together we must toil
amin *dmin* *Bb* *G*
To build a world where hunger will not keep the people chained
gmin *F* *C* *Bb* *F*
To build a world that will still bear fruit tomorrow.

VERSE 2

I'm calling to the rich folks in their mansions down the road
To come and see the backs that break while carrying your load
Please come let us show you how the chemicals you send
Kill the earth that one day must support your children.

CHORUS

VERSE 3

I'm calling to the heavens to the power there above
To thank you for the harvest given freely through your love
Grant us courage, strength and hope throughout the coming year
For the sake of all the planet Lord, I pray that you can hear me singing

CHORUS (2x)





Mission Statement

The mission of the Asian Rural Institute is to build an environmentally healthy, just and peaceful world, in which each person can live to his or her fullest potential.



This mission is rooted in the love of Jesus Christ.

To carry out this mission, we nurture and train rural leaders for a life of sharing.

Leaders, both women and men, who live and work in grassroots rural communities primarily in Asia, Africa and the Pacific, form a community of learning each year together with staff and other residents.

Through community-based learning we study the best ways for rural people to share and enhance resources and abilities for the common good.

We present a challenge to ourselves and to the whole world in our approach to food and life.



That We May Live Together



About the ARI Mission Statement

The official documents and brochures of ARI published in its first year 1973, state that the mission of ARI is "Based on the love of God, to train those mid-level leaders who devote their life for the betterment and prosperity of the people in Asian rural communities and to contribute to the creation of a just and peaceful society." In the 1980s, the target areas were expanded and clearly mentioned as "Asia, Africa and other parts of the world," adding, further, that

ARI aims at "self-sustaining development of the people of 'The Third World.'" And in the 1990s, "people of 'The Third World'" is rewritten as "marginalized people in the society." It was then confirmed that as the core of the training program, an emphasis shall be placed upon the importance of food that sustains our life so that all living creatures may live together. Through further discussions, the Mission Statement as it is now was finalized in the year 2000.

**"Forty Years of Walking Together
with Grassroots Leaders"**

Asian Rural Institute
Rural Leaders Training Center